

INSTRUCTION MANUAL FOR THE HAC-7 SERIES OF RIFLES

Copyright HAC 1984

This manual should always accompany this rifle, and should be transferred with it upon change of ownership

NOTICE

Holloway Arms Company shall not be responsible for injury, death, or damage to property resulting from either intentional or accidental discharge of this rifle, or from its function when used for purposes or subjected to treatment for which it was not assigned. Holloway Arms Company will not honor claims involving this rifle which result from carelessness or improper handling, unauthorized adjustment or parts replacement, corrosion, neglect, or the use of wrong caliber ammunition, or the use of ammunition other than original high quantity commercially manufactured ammunition in good condition, or any combination thereof. Holloway Arms Company will not honor claims for any reason or cause when such claims are made by the second or subsequent owner.

PRECAUTIONS

READ AND UNDERSTAND ALL OF THE FOLLOWING PRECAUTIONS BEFORE REMOVING THIS FIREARM FROM ITS PACKAGE

WARNING

This Holloway Arms Co. product is classified by the Bureau of Alcohol, Tobacco, and Internal Revenue Service, U.S. Treasury Department as a firearm or dangerous weapon. It is therefore potentially lethal. If this or any other firearm is carelessly handled, unintentional discharge could result and could cause injury, death, or damage to property.

TABLE OF CONTENTS

Section 2	<u>FUNCTION: LOADING, UNLOADING, FIRING, MALFUNCTIONS, ADJUSTMENTS</u>
Section 3	<u>MAINTENANCE: DISASSEMBLY, ASSEMBLY, CLEANING, STORAGE, SERVICE, REPAIR</u>
Section 4	<u>PARTS LISTS AND ILLUSTRATIONS</u>
Section 5	<u>TECHNICAL DATA AND DESCRIPTIONS</u>

CAUTION!

USE ONLY ORIGINAL, HIGH QUALITY COMMERCIALY MANUFACTURED AMMUNTTION IN GOOD CONDITION OF THE CORRECT CALIBER FOR YOUR RIFLE.

CAUTION: READ THIS INSTRUCTION MANUAL COMPLETELY PRIOR TO LOADING AND FIRING YOUR HOLLOWAY ARMS CO. FIREARM. THIS MANUAL GIVES BASIC ADVICE ON THE SAFE AND PROPER HANDLING AND FUNCTIONING OF THIS FIREARM. WE WANT YOU TO ENJOY SHOOTING YOUR FIREARM, BUT WE WANT YOU TO ENJOY IT SAFELY. YOUR SAFETY AND THE SAFETY OF OTHERS (INCLUDING YOUR FAMILY) DEPENDS ON YOUR MATURE COMPLIANCE WITH THAT ADVICE AND YOUR ADOPTION, DEVELOPMENT, AND CONSTANT EMPLOYMENT OF THESE PRACTICES. IF UNFAMILIAR WITH FIREARMS YOU SHOULD SEEK FURTHER ADVICE THROUGH SAFE HANDLING COURSES RUN BY YOUR LOCAL GUN CLUBS, N.R.A. APPROUED INSTRUCTOR, POLICE DEPARTMENT OR SIMILAR QUALIFIED ORGANIZATIONS.

SECTION 1: PRECAUTIONS AND SAFETY INSTRUCTIONS

1. Always handle all firearms as if they were loaded so that you never fire it accidentally when you think that it is unloaded.
2. Never point a firearm at anything you do not intend to shoot so that if it fires accidentally, injury, death, or damage to property will be prevented.
3. Never take anyone's word that a firearm is unloaded; check for

yourself with your fingers off of the trigger and the weapon pointed in a safe direction so that you never fire the firearm accidentally when you think that it is unloaded.

4. Always be sure that the barrel and action are clear of obstructions. Clean a fouled firearm immediately so that it will function safely and correctly.

5. Never squeeze the trigger or put your finger in the trigger guard until you are aiming at a target and ready to shoot. This will prevent you from firing the weapon when it is pointing in an unsafe direction.

6. Always keep the bolt forward and the chamber empty to eliminate the risk of accidental discharge until ready to use.

7. Be absolutely sure of your target and the area behind it before you squeeze the trigger. A bullet could travel through or past your target 1 1/2 miles or more! - IF IN DOUBT, DON'T SHOOT

8. Never shoot at a hard surface, such as a rock, or a liquid surface, such as water. A bullet may ricochet and travel in any direction to strike you, or all object you cannot see, causing, injury, death, or damage to property.

9. Always be sure that your backstop is adequate to stop and contain bullets before starting target practice so that you do not hit anything outside the range shooting area.

10. Always put someone in charge to maintain safety control when a group is firing on a range. Obey his or her commands immediately so that discipline is maintained to reduce the likelihood of accidents.

11. Always carry your firearm empty and with the action locked in the open position while on a range preparing to fire. Keep it pointing downrange towards the backstop when loading, firing, and unloading to eliminate the risk of injury, death, or damage to property.

12. Never leave a loaded firearm unattended. Someone, especially a child, may fire it and cause injury, death, or damage to property.

13. Never use a firearm if it fails to function properly. Never force a jammed action, as a cartridge may explode, causing serious injury, possible death and serious damage to your firearm.
14. Always use only clean, dry, original, high quality commercially manufactured ammunition in good condition which is correct for the caliber of your weapon. Firearm and ammunition manufacturers design their products within exacting engineering safety limits, but handloads sometimes exceed those limits and could be unsafe.
15. Always wear protective shooting glasses for eye protection.
16. IMMEDIATE ACTION UPON FAILURE TO FIRE: Hold weapon, pointing safely downrange towards backstop and wait thirty (30) seconds-when weapon fails to fire. If a hangfire (slow ignition) has, occurred, the cartridge will cook-off (fire) within thirty (30) seconds. If the cartridge does not fire, while keeping the weapon pointed safely downrange, remove the magazine eject the round in the chamber, lock the bolt -in the rearward position, and examine the primer of the ejected cartridge. If the firing pin indentation is shallow, off-center, or nonexistent, have the firearm examined by a competent gunsmith. If the firing pin indentation appears normal in comparison with similar previously fired cases, assume faulty ammunition; segregate misfired cartridges from other live ammunition and empty cases reload the weapon and continue to fire. Dispose of misfired rounds in accordance with the ammunition manufacturer's instructions.
17. Never fire your weapon near an animal unless it is trained to accept the sound; the startled reaction of the animal could injure it or cause an accident.
18. Never walk, climb, or follow a companion with your firearm ready to fire, or with the bolt in any position other than forward on an empty chamber, to eliminate the risk of accidental discharge. When hunting, hold your weapon so that you can always control the direction of the muzzle.
19. Never indulge in "horseplay" while holding your firearm, as it may be accidentally discharged.
20. Never drink alcoholic beverages or take drugs before, or during shooting, as your vision and judgement could be seriously impaired, making your gun handling unsafe.
21. Always seek a doctor's advice if you are taking medication, to be sure you are fit to shoot and handle weapons safely.

22. Always wear ear protection when shooting, especially on the range. Without ear protection, the noise from your and of other firearms close to you, will leave a "ringing" in your ears for some time after firing, and will eventually lead to cumulative long term permanent hearing loss.

23. Always make sure that your firearm is not loaded before cleaning, stripping, storing, or traveling. Make sure that the action is locked open before laying it down, or handing it to another person, so that it cannot be fired when it is unsafe to do so.

24. Always store your firearms and ammunition in separate locked receptacles, out of reach and out of sight of children, to minimize the risk of firearm and ammunition being easily available for unauthorized loading and firing.

25. Always instruct children to respect firearms. If you teach your children to shoot, teach them to use firearms properly, and always supervise them closely. Always stress safety so that your children will not fire weapons when it is unsafe to do so.

26. Always keep clear and keep others clear of the ejection port, as spent cartridge cases are ejected with enough force to cause injury. Never place fingers in the ejection port; they could be burned by hot metal or injured by the bolt moving forward into battery.

27. Be sure that the cam pin is installed in the bolt carrier group. If it is not, the rifle can still fire, possibly causing serious injury, possibly death, and severe damage to the rifle.

28. DO NOT exchange bolt. assemblies from one rifle to another. It could cause damage to the rifle, serious injury, and possible death.

29. DO NOT fire the rifle if there is water in the barrel. It could explode, causing serious injury, possible. death,. and damage to the rifle.

30. If a noticeable difference in sound or recoil is experienced, STOP FIRING, IMMEDIATELY. Either condition could indicate an incomplete propellant burn and a bullet still in the bore of the rifle. Retract the bolt slowly and remove the fired case. Clear the rifle as specified in this instruction manual and check the bore for unburned powder in the bore or receiver. Remove all unburned propellant and set aside the rest of that lot of ammunition. If there is a projectile lodged in the bore, DO NOT ATTEMPT TO REMOVE IT! Secure the weapon and take it to a qualified gunsmith to remove the stuck projectile. Failure to do so could result in damage to the rifle, serious injury, and possible death.

SECTION 2: FUNCTION

The Holloway Arms Co. Model 7 rifle is ready to fire when a loaded magazine is inserted into the magazine well, the bolt carrier assembly is retracted to cock the hammer, and released to travel forward to feed a cartridge from the top of the magazine into the chamber. Loading is completed as the bolt carrier cams the bolt through sixty degrees (60.) rotation locking the bolt head to the barrel and barrel

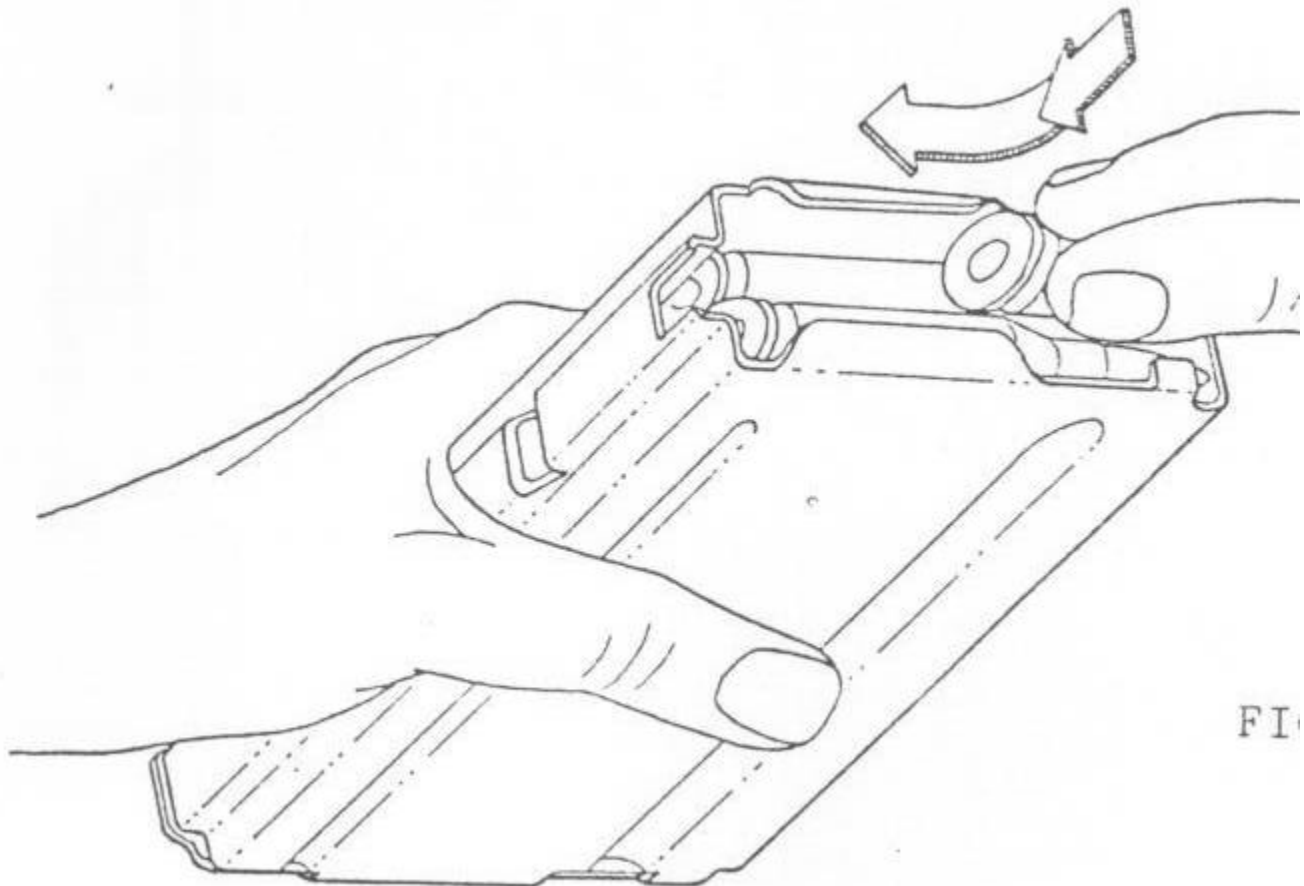
extension. When the trigger is squeezed, the sear disengages from the hammer which pivots forward under the force of the hammer spring to strike the rear of the firing pin. The firing pin is positively locked to the rear until the bolt is fully locked. The firing pin is held to the rear by a spring and cannot protrude through the bolt face until the force of the hammer fall overcomes the spring pressure and the inertia of the firing pin. The firing pin is driven forward to strike the primer in the cartridge base. Upon detonation, the bullet is forced down the barrel by the high gas pressures generated by the burning powder, with the rifling lands and grooves imparting stabilizing spin to the bullet so that it will describe an accurate trajectory to the target.

As the base of the bullet passes the gas port tapped into the top of the barrel, a portion of the high pressure gas is vented out, and pushes rearward on the gas assembly as the gas expands. The amount of gas bled off depends on the gas regulator setting. The rearward motion of the gas piston assembly forces the bolt carrier assembly back against the pressure of the recoil spring, camming the bolt through sixty degrees (60.) of rotation. At this time, the firing pin is positively locked to the rear. The final unlocking only occurs after the bullet has left the barrel and the gas pressure has been reduced to a safe level. The rearward motion of the bolt carrier forces the hammer back into positive engagement with the sear, and as the bolt retracts, the extractor pulls the spent casing from the chamber, and the force of the spring-loaded ejector expels the case out of the ejection port. The movement of the bolt carrier will continue to the rear until the increasing pressure of the compressing recoil spring exceeds the decreasing inertia of the bolt carrier assembly. If the last round has been fired, the magazine follower will engage the bolt hold-open mechanism and lock the bolt to the rear. If ammunition still remains in the magazine, however, the bolt carrier assembly will move forward to again feed and lock the next cartridge into the chamber. On semi-automatic models, the trigger must be released and squeezed again to fire the weapon. On selective fire models with the selector switch set on "AUTO", the rifle will continue to fire until either the trigger is released or the magazine is empty, whichever occurs first.

LOADING

To Load A Magazine:

1. CAUTION: READ SAFETY INSTRUCTIONS (SECTION 1).
2. Use only ammunition suitable for the caliber of your rifle.
3. With open end uppermost, grasp the magazine in one hand, with the longest edge towards your palm. (See Figure 1). Place a cartridge on the magazine follower with the base just forward of the retaining lips. Press the cartridge down and to the back until the base of the cartridge touches the rear top of the previous cartridge and press down and back. Repeat until the magazine is loaded to the desired capacity.



CAUTION: TO MINIMIZE THE RISK OF UNINTENTIONAL DISCHARGE, LOAD LIVE AMMUNITION ONLY WHEN YOU ARE ABOUT TO FIRE.

To Load The Rifle:

1. CAUTION: READ SAFETY INSTRUCTIONS (SECTION 1) - KEEP RIFLE

POINTING IN A SAFE DIRECTION AND DO NOT TOUCH THE TRIGGER.

2. Remove empty magazine from rifle by placing your fingers around the front edges of the magazine, pushing forward with your thumb on the magazine release lever, and pulling straight down. (See Figure 2).

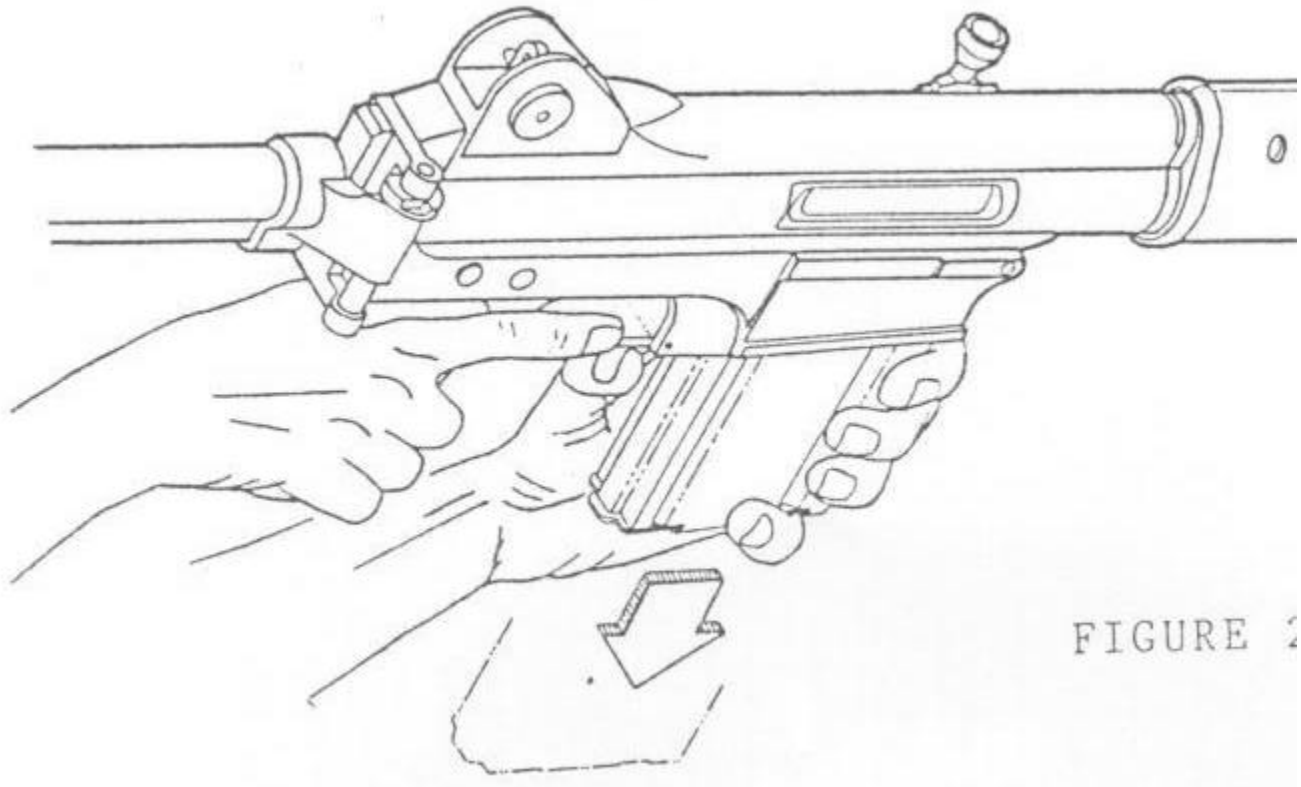


FIGURE 2

3. Hold rifle by the pistol grip with one hand, and grasp the charging handle with the other. Pull the charging handle to the rear far enough for the bolt to be completely free of the barrel extension, and visually inspect the chamber to insure that it is empty. If it is not, pull the charging handle fully to the rear to eject the case / cartridge. If the chamber is clear, allow the bolt carrier assembly to move completely forward into full battery under the pressure of the recoil spring. NOTE: Never "ride" the bolt into battery by easing forward on the charging handle. Always allow the bolt carrier assembly to move forward under the full pressure of the recoil spring. (If the bolt was fully to the rear, close the bolt on an empty chamber).

4. Insert loaded magazine into the magazine well with bullets pointing forward, towards the muzzle. Push magazine fully "home" upwards until the magazine catch is heard to "click" locking it in place. IMPORTANT: Do not strike the base of the magazine to drive it home - just push firmly into the rifle. Otherwise, you could damage the magazine and

injure your hand. (See Figure 3)

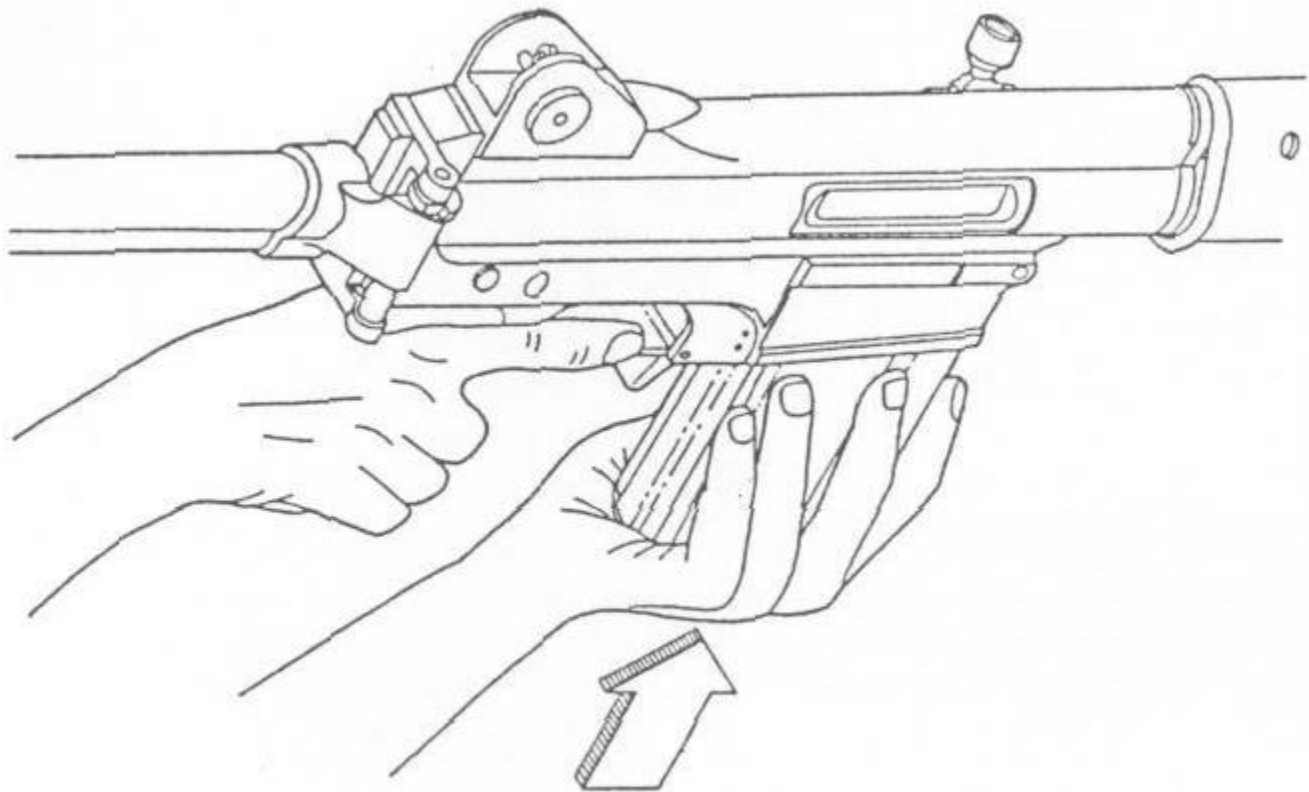


FIGURE 3

NOTE: The safest way to carry your rifle is with an empty chamber and empty magazine. However, if you wish to carry the rifle with a loaded magazine locked in place. (i.e its present condition in the described loading sequence) keep the chamber empty with the bolt carrier assembly fully forward.

5. When you are ready to shoot, grasp the charging handle as described in Step 3 and pull it fully to the rear to cock the hammer. Release the charging handle to feed the top cartridge from the magazine into the chamber. THE RIFLE IS NOW LOADED AND READY TO FIRE.

6. Move the selector switch to the "SAFE" position until ready to fire to prevent the hammer from falling forward if the trigger is moved.

CAUTION: NEVER LEAVE FIREARMS COCKED AND READY TO FIRE WITHOUT ENGAGING THE MANUAL SAFETY, AS THIS IS THE FIRING POSITION AND IS EXTREMELY DANGEROUS; THE RIFLE COULD EASILY BE DISCHARGED ACCIDENTALLY CAUSING INJURY, DEATH, OR DAMAGE

TO PROPERTY.

To Unload The Rifle:

CAUTION: READ SAFETY INSTRUCTIONS (SECTION 1) - KEEP RIFLE POINTING IN A SAFE DIRECTION AND DO NOT TOUCH THE TRIGGER. ALWAYS UNLOAD YOUR RIFLE IMMEDIATELY AFTER USE AND PRIOR TO CLEANING AND STORAGE TO MINIMIZE THE RISK OF ACCIDENTAL DISCHARGE.

2. Place hand under magazine to prevent its falling and press magazine release lever forward (towards the muzzle) to release and eject the magazine.
3. Using the charging handle, pull the bolt carrier group sharply to the rear to extract and eject a round from the chamber. (If the magazine was empty after firing, the bolt carrier group would already be locked to the rear by the bolt hold-open mechanism).
4. CAUTION: LOOK INTO THE CHAMBER TO ENSURE THAT IT IS EMPTY AND SEE THAT THE MAGAZINE HAS BEEN REMOVED.
5. Allow the bolt carrier assembly to return forward on an empty chamber either by releasing the charging handle or by depressing the bolt release lever. Squeeze the trigger to allow the hammer to fall forward on the empty chamber.
6. Remove the remaining live ammunition, if any, from the magazine by sliding the cartridges forward and out of the magazine.
7. Collect live ammunition for safe storage and spent cartridge cases for disposal.

FIRING

Before firing your HAC rifle, practice your stance or position, aim, rhythm, and breathing for steady aim, with your rifle UNLOADED.

Practice firing on a safe, controlled range before going hunting or using your rifle for any other type of shooting. CAUTION: WEAR PROTECTIVE SHOOTING GLASSES FOR EYE PROTECTION. WEAR EAR PROTECTION. WITHOUT EAR PROTECTION, THE NOISE FROM YOUR RIFLE, AND OTHER GUNS CLOSE TO YOU, WILL LEAVE A "RINGING" IN YOUR EARS FOR SOME TIME AFTER FIRING "AND WILL LEAD TO PERMANENT AND CUMULATIVE LONG TERM HEARING LOSS.

To Fire:

1. CAUTION: READ SAFETY INSTRUCTIONS (SECTION 1) - KEEP RIFLE POINTING IN A SAFE DIRECTION.
2. Load rifle as previously described.
3. Grasp pistol grip with one hand, and the forearm of the rifle with the other hand. Rest your index finger on the outside of the trigger guard, and be sure that the fingers of the hand on the forearm do not touch the barrel to avoid burns. Take aim at the target by aligning the sights using good steady hold procedures.
4. Release the safety by rotating the selector switch into the "FIRE" position.
5. Keeping steady aim, place the pad of the index finger on the trigger and squeeze gently until the hammer falls. Do not jerk the trigger as you will disturb your aim and spoil your accuracy. To fire the second and subsequent shots, all that is necessary is to release the trigger and squeeze it again after every shot until you have completed firing.
6. THIS IS THE SEMI-AUTOMATIC MODE OF THIS RIFLE. IN THIS MODE, IT IS IMMEDIATELY LOADED AND READY TO FIRE AGAIN AFTER EACH, SHOT UNTIL THE MAGAZINE IS EMPTY. SET ON "AUTO" ON N.F.A. WEAPONS, THE RIFLE WILL CONTINUE TO FIRE AS LONG AS THE TRIGGER IS DEPRESSED. IT WILL FIRE UNTIL EITHER THE TRIGGER IS RELEASED OR THE MAGAZINE RUNS OUT OF ALL AMMUNITION, WHICHEVER OCCURS FIRST.
7. Release trigger, remove finger from trigger and trigger guard, and turn the selector switch to "SAFE". CAUTION: IF THE RIFLE FAILS TO FIRE, HOLD IT, KEEPING IT POINTED TOWARDS THE TARGET AND WAIT THIRTY (30) SECONDS. IF A HANGFIRE (slow ignition) HAS OCCURED, THE CARTRIDGE WILL FIRE WITHIN THIRTY (30) SECONDS (cookoff). IF THE CARTRIDGE DOES NOT FIRE DURING THIS TIME, REMOVE THE MAGAZINE, EJECT THE CARTRIDGE, AND EXAMINE THE PRIMER. IF FIRING PIN INDENT ON PRIMER IS LIGHT, OFF-CENTER, OR NON-EXISTANT, HAVE THE RIFLE EXAMINED BY A COMPETENT GUNSMITH. IF FIRING PIN INDENT APPEARS NORMAL (IN COMPARISON WITH OTHER SIMILAR PREVIOUSLY FIRED CASES) ASSUME FAULTY AMMUNITION; SEGREGATE MISFIRED CARTRIDGE FROM OTHER LIVE AMMUNITION AND EMPTY CASES; RELOAD AND CONTINUE TO FIRE. NOTE: Dispose of misfired rounds in accordance with the ammunition manufacturers

instructions.

8. CAUTION: KEEP RIFLE POINTING IN A SAFE DIRECTION. UNLOAD AS PREVIOUSLY DESCRIBED.

IMPORTANT: If you load the rifle but do not fire it, move the selector switch to the "SAFE" position until ready to fire. If you lose the opportunity to fire, unload your rifle as previously described until you are again ready to fire. CAUTION: NEVER LEAVE RIFLE COCKED AND READY TO FIRE AS THE FIRE CONDITION IS EXTREMELY DANGEROUS, AND THE RIFLE COULD EASILY BE ACCIDENTALLY DISCHARGED CAUSING INJURY, DEATH, OR DAMAGE TO PROPERTY.

MALFUNCTIONS

Malfunctions are usually the result of worn parts or improper care of the firearm. A knowledge of how the rifle functions will enable the user to classify and correct the malfunction. Listed below are the types of malfunctions which might occur.

1. Failure to Feed: The top cartridge in the magazine is not positioned up and in front of the bolt. Most malfunctions of this nature are failures to feed caused by a defective or dirty magazine.
2. Failure to Chamber: The top cartridge from the magazine is not seated in the chamber.
3. Failure to Fire: The cartridge is chambered but does not fire.
4. Failure to Extract: The fired case is not completely removed from the chamber.
5. Failure to Eject: The fired case is not ejected from the weapon.
6. Failure to Cock: if the bolt carrier group does not move to the rear far enough to clear the top cartridge of the magazine, or if the hammer is not held to the rear by the sear, the rifle will fail to cock.

MALFUNCTIONS	CAUSE	CORRECTIVE ACTION
Failure to feed	Improperly seated magazine	Tap upwards

	Dirty or dented magazine	Replace magazine
	Weak or broken magazine spring	Replace magazine
	Worn magazine notch	Replace magazine
	Corroded ammunition	Replace ammunition
	Worn or broken magazine catch	Replace magazine catch
	Insufficient gas pressure	Adjust setting of gas regulator
Failure to chamber	Dirty chamber	Clean chamber
	Obstruction in chamber	Remove obstruction
Failure to fire	Weak recoil spring	Replace recoil spring
	Faulty hammer	Replace hammer
	Defective ammunition	Replace ammunition
	Bolt not locking properly	Clean bolt
	Improper assembly of bolt / firing pin	Assemble correctly
Failure to extract	Weak recoil spring	Replace recoil spring
	Faulty hammer spring	Replace hammer spring
	Dirty chamber	Clean chamber
	Broken extractor	Replace extractor
	Weak / broken	Replace extractor

	spring	spring
Failure to eject	Broken ejector	Replace ejector
	Broken or missing extractor	Replace extractor
	Weak / broken ejector spring	Replace ejector spring
Failure to cock	Worn sear	Replace sear
	Worn sear notch	Replace hammer
	Obstruction in receiver	Clean receiver
	Low powered ammunition	Replace ammunition
	Insufficient gas pressure	Check gas cutoff and regulator

IMMEDIATE ACTION FOR MALFUNCTIONS:

1. **WARNING:** If an audible "POP" or reduced, recoil is experienced during shooting, **CEASE FIRING IMMEDIATELY!** Place the selector switch on "SAFE", remove the magazine, and lock the bolt to the rear. Visually inspect the bore and/or insert a cleaning rod into the bore to insure that there is not a projectile lodged in the bore. If there is a projectile lodged in the bore, **DO NOT ATTEMPT** to remove it. Secure the weapon and take it to a qualified gunsmith to remove it or further damage may be done to your weapon.

2. If your rifle stops firing before you do, remember the acronym **SPORTS**.

a. **SLAP** upwards on the bottom of the magazine to make sure that the magazine is fully and properly seated in the magazine well.

b. **PULL** the charging handle all the way to the rear.

c. OBSERVE the ejection of the case or cartridge. Visually check the chamber and inspect for obstruction.

d. RELEASE the charging handle to feed a new round into the chamber ONLY IF a case or cartridge was ejected and the chamber is clear. NOTE: Do not ride the charging handle forward. Always allow the bolt to close with the full force of the recoil spring.

e. THUMB the bolt carrier forward to insure that the bolt is fully seated and locked. CAUTION: Bolt carrier may be hot from firing the rifle.

f. SIGHT the weapon safely downrange and attempt to fire.

3. If the rifle still will not fire, cease fire, clear the rifle, and reread the section on malfunctions.

4. If you are still unable to get the rifle to fire, see Section 3, "Maintenance: Service and Repair."

5. If there is a case lodged in the chamber, clear the rifle and tap the case out by inserting a cleaning rod down the barrel from the muzzle.

6. Any time the rifle has been disassembled, always perform a function check upon reassembly. First clear the rifle and check the chamber.

a. With the selector switch set on SAFE pull the charging handle fully to the rear and release it. Squeeze the trigger. The hammer should not fall.

b. Release the trigger. Move the selector switch to "FIRE" . Squeeze the trigger and hold it to the rear. The hammer should fall. With the trigger held to the rear, pull the charging handle fully to the rear and release it. Release the trigger and squeeze it again. The hammer should fall.

c. On selective fire models, place the selector switch on "AUTO". Pull the charging handle fully to the rear and release it. Squeeze the trigger and hold it to the rear. The hammer should fall. With the trigger held to the rear, pull the charging handle fully to the rear and release it. Release the trigger and squeeze it again. The hammer should not fall.

d. Should the rifle not perform as indicated, disassemble the rifle again, identify the problem and reassemble the rifle correctly, and repeat the function check.

e. Should the rifle still not perform as indicated, see Section 3, "Maintenance: Service and Repair."

ADJUSTMENTS

CAUTION: READ SAFETY INSTRUCTIONS (Section 1) Hinged Trigger Guard:

1. The hinged trigger guard is for use when firing the rifle while wearing gloves or mittens.
2. To open the hinged trigger guard, locate the spring-loaded detent pins at the front of the trigger guard. (See Figure 4).

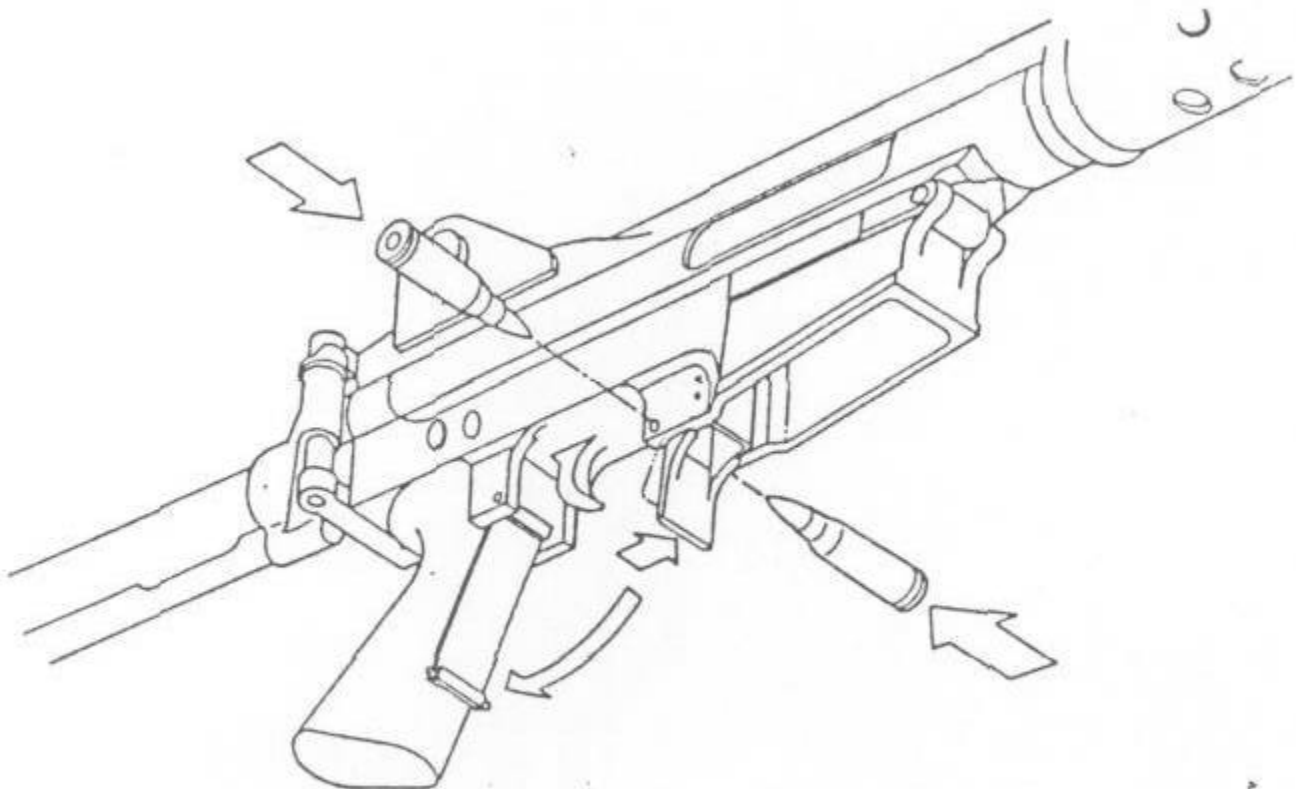


FIGURE 4

3. As illustrated, depress each of the detent pins with a bullet tip and the trigger guard will hinge down and back along the front edge of the pistol grip. The magazine release lever must be pushed forward for the trigger guard to clear during the initial phase of opening. In operation, the trigger guard will be held in place by the firing hand.

Front Sight:

1. The front sight is adjustable for elevation. To adjust for elevation, depress the spring-loaded detent pin with a bullet tip and, using the bullet tip as a lever, rotate the front sight post. (See Figure 5).

2. To raise the strike of the bullet, rotate the post clockwise. To lower the strike of the bullet, rotate the post counterclockwise. Each detent notch will change the point of impact one inch (1") at one hundred (100) yards.

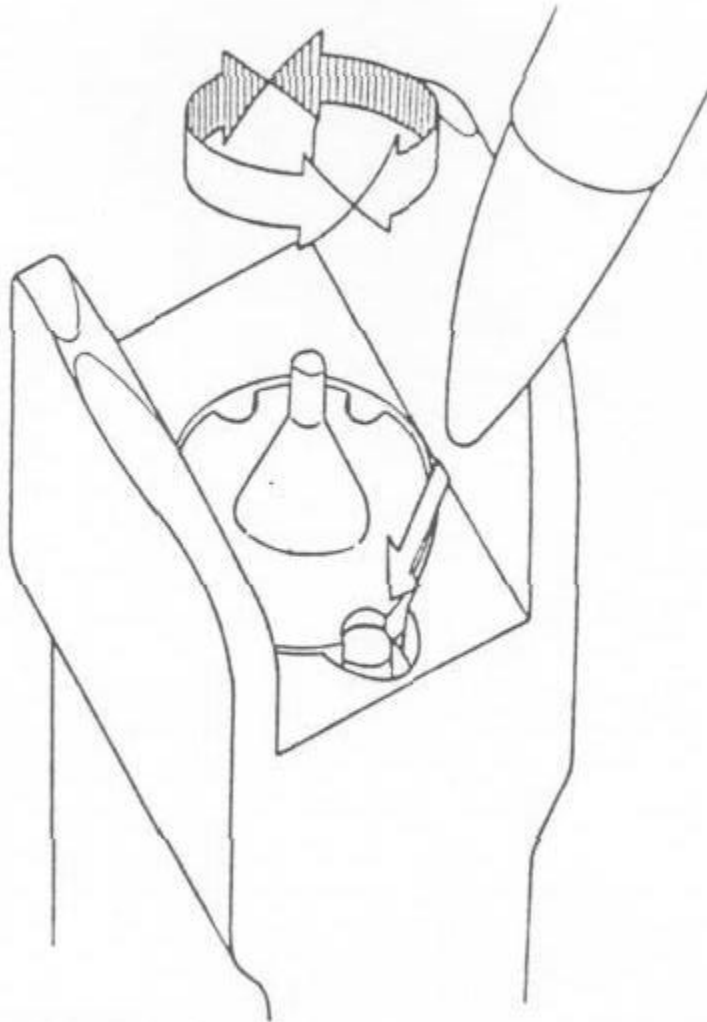


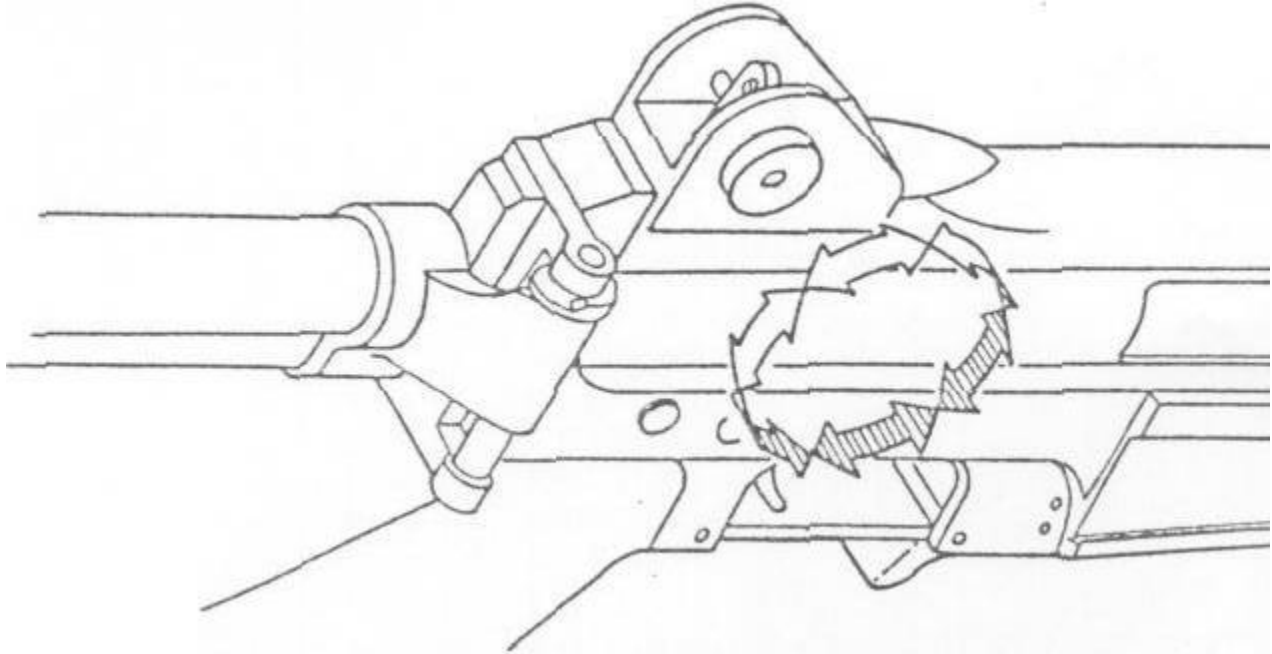
FIGURE 5

Rear Sight Adjustment:

1. The rear sight is adjustable for windage. To adjust the rear sight, locate and turn the adjustment knob located on the side of the sight. (See Figure 6).
2. To move the strike of the bullet to the right, rotate the rear sight adjustment knob clockwise (towards the muzzle). To move the strike of the bullet to the left, rotate the rear sight adjustment knob counter-

clockwise (towards the butt). Each internal detent click of the rear sight windage knob will change the impact one inch (1") at one hundred (100) yards.

3. The two positions of the rear peep sight do not change the sighting distance of the rifle or the impact of the bullet. The smaller aperture (2.5mm) is designed for daytime firing, while the larger aperture (4mm) is designed for night time or any other reduced visibility firing situation.



Gas Cut-Off and Gas Regulator:

1. The gas cut-off is provided to enable the shooter to prevent or allow gas to be bled from the barrel into the gas tube-gas piston assembly, at the shooter's discretion. The base into the slot of the gas cut-off and rotating the gas cutoff ninety degrees (90.) or one-quarter (1/4) turn. If the slot is parallel to the bore of the rifle, the gas flow is interrupted. In this position, the rifle will not function as a semi-automatic or automatic rifle, depending on the model. The shooter must manually cycle the charging handle after each shot to eject the fired case, cock the hammer, and chamber a new round. With the gas cut-off slot perpendicular to the line of the bore of the rifle, the gas channel is open and the rifle will function semi-automatically and automatically, depending on the model. (See Figure 7).

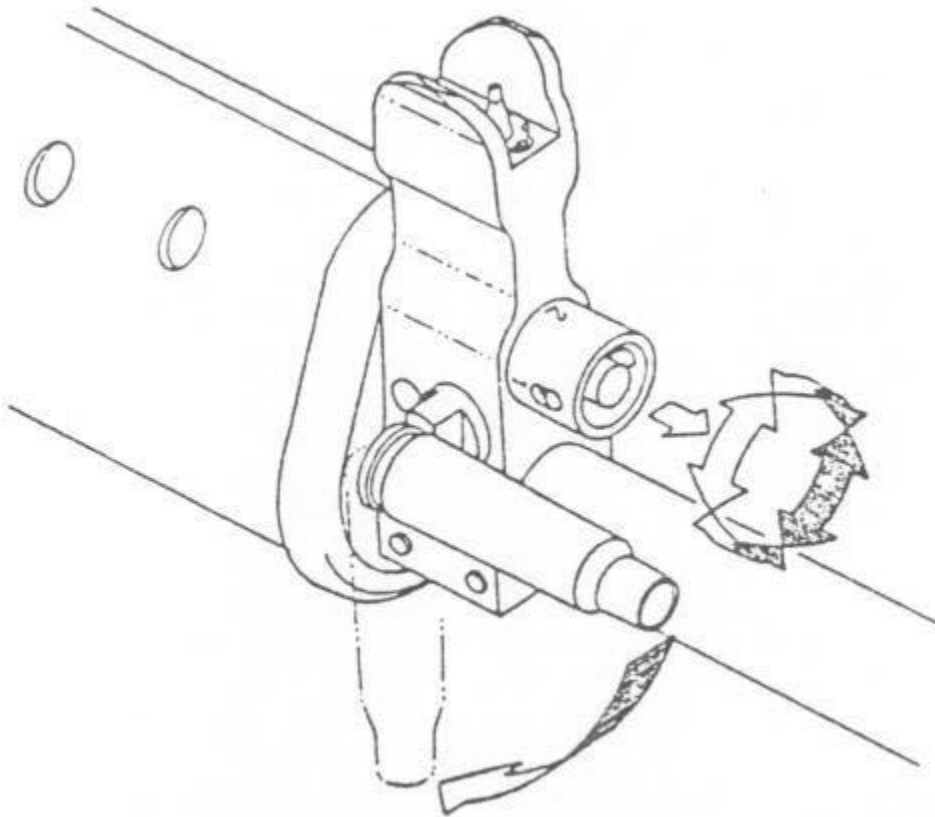


FIGURE 7

2. The gas regulator is provided to allow the shooter to control the amount of gas being bled from the barrel into the gas tube gas piston assembly. This is done to compensate for varying gas pressures between different loadings of ammunition appropriate to the caliber of the rifle . It is NOT intended as an alternative to the proper cleaning, care, and maintenance of the rifle.

3. The gas regulator ring is marked with the numerals 1,2,3,4. Number 1 is the smallest gas opening, Number 2 the next smallest, Number 3 the next to largest, and Number 4 the largest gas opening. Looking down at the gas regulator from the top of the rifle, the number visible at the top of the gas regulator ring is the current gas setting.

4. To change the adjustment of the gas regulator, pull the springloaded gas regulator ring towards the muzzle of the rifle to disengage the positive detent. The gas regulator ring may now be rotated to any desired setting. Upon releasing the gas regulator ring, it will return to its positive detent position under spring pressure. (See Figure 7) .

NOTE: IF THE GAS REGULATOR RING IS NOT SET EXACTLY ON ONE OF THE FOUR SETTINGS, THE GAS PASSAGE WILL BE BLOCKED AND THE

RIFLE WILL NOT FUNCTION AS A SEMI-AUTOMATIC RIFLE. BE SURE BEFORE FIRING THAT THE GAS REGULATOR RING HAS RETURNED TO THE POSITIVE' DETENT POSITION.

5. To set the gas regulator for a particular load, set the gas regulator ring on setting number 1. Fire the rifle to see if this opening will allow sufficient gas to bleed out to function the action. If not, clear the rifle and adjust the setting to number 2, and fire the weapon again. Repeat this procedure until the smallest possible opening that will reliably function the rifle is set on the gas regulator ring. Holloway Arms, Company advises against the use of setting number 4 unless it is absolutely essential to the functioning of the rifle. Needless use of setting number 4 or of any setting larger than is required to function the rifle can lead to excessive wear on the mechanism of the rifle and possible failure of overstressed parts.

Reversing The Selector Switch:

1. The selector switch is reversible to be accessible to lefthanded shooters on right-handed rifles, and vice versa.
2. After clearing and disassembling the rifle, move the selector switch to a point between the "SAFE" and "FIRE" detent positions. (See Figure 8)
3. From the opposite side of the rifle, push the base of the selector lever rod until the lever can be pulled free of the lower receiver. (See Figure 9)
4. At this point, the selector lever detent pin will be forced by the pressure of the selector lever detent spring from its hole. Remove both the selector lever detent pin and the selector lever detent spring from the lower receiver and insert them in the corresponding hole in the opposite side of the receiver. (See Figure 9)
5. Depress the selector lever detent, compressing the selector lever detent spring, until the selector lever rod can be inserted from the desired side of the lower receiver and through the receiver. NOTE: BE SURE DURING REASSEMBLY THAT THE INDICATOR ON' THE SELECTOR SWITCH IS POINTED BETWEEN "SAFE" AND "FIRE". IF IT IS NOT, YOU WILL HAVE TO REPEAT THE ENTIRE DISASSEMBLY PROCEDURE, BECAUSE THE RIFLE WILL NOT FIRE IN ANY OTHER CONFIGURATION. (See Figure 10)
6. Perform a function check to insure proper reassembly.

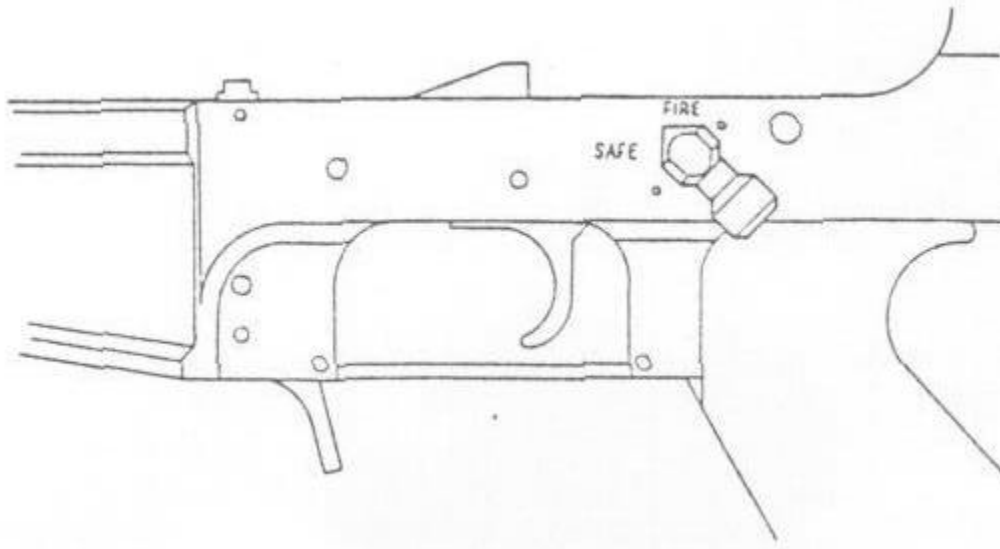


FIGURE
8

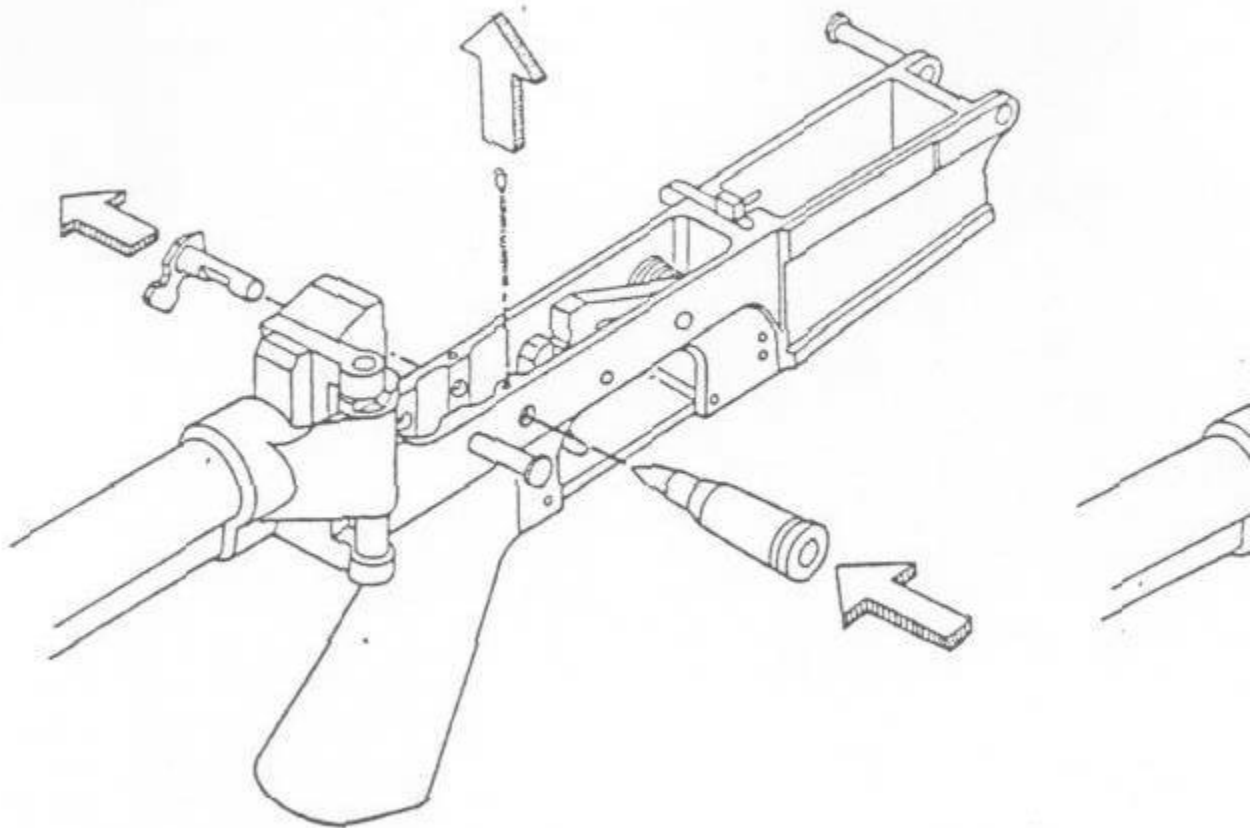


FIGURE 9

FIGURE
10

Adjustment Of The Muzzle Brake/Flash Suppressor:

1. The muzzle brake/flash suppressor is adjustable to compensate for either left or right hand muzzle flip, to insure straight-line recoil and faster recovery between shots.
2. After ascertaining the direction of muzzle flip by firing, clear the rifle and allow the muzzle brake/flash suppressor to cool. Using the proper size wrench, loosen the muzzle brake/flash suppressor nut. Rotate the muzzle brake/flash suppressor to the desired angle and retighten the muzzle brake/flash suppressor nut. **DO NOT OVERTIGHTEN**. Repeat as necessary until the desired results are achieved. (See Figure 11).

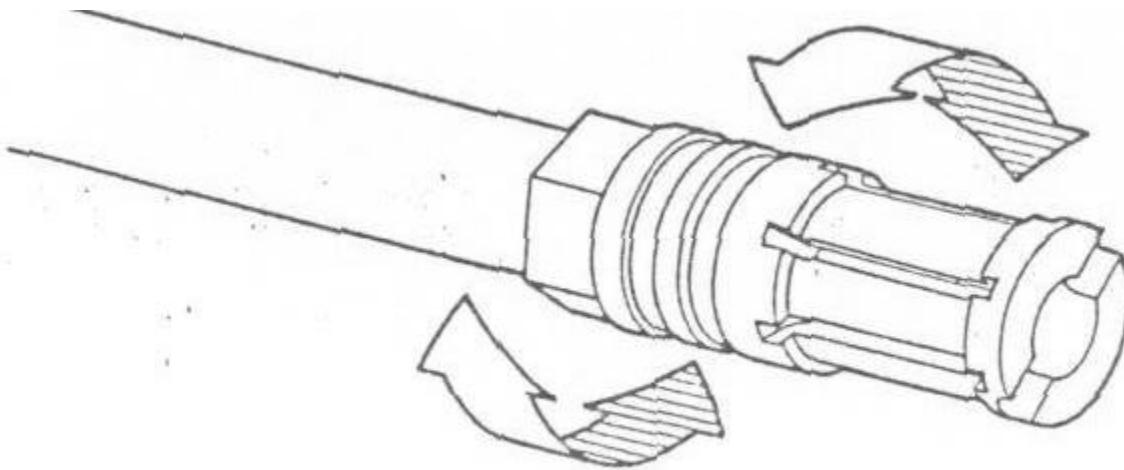


FIGURE 11

Adjustment of the Folding Stock:

1. The folding, stock is provided so that the shooter, at his discretion, may extend or fold the stock for ease of firing, carrying, transporting, or storing,
2. To fold the stock, place your fingers along the bottom of the lower receiver and place the web of your hand on top of the top of the stock tube. Press down with the web of your hand and pull upward with your fingers to disengage the locking assembly and to lower the cam to the position where it will clear the notch in the lower receiver. When the stock has been lowered to this position on the stock hinge pin, swing the stock towards the side of the rifle that has the ejection port. Lay the stock along the receiver as closely as possible. The cam will retain the stock in this position until physically released. (See Figure 12)

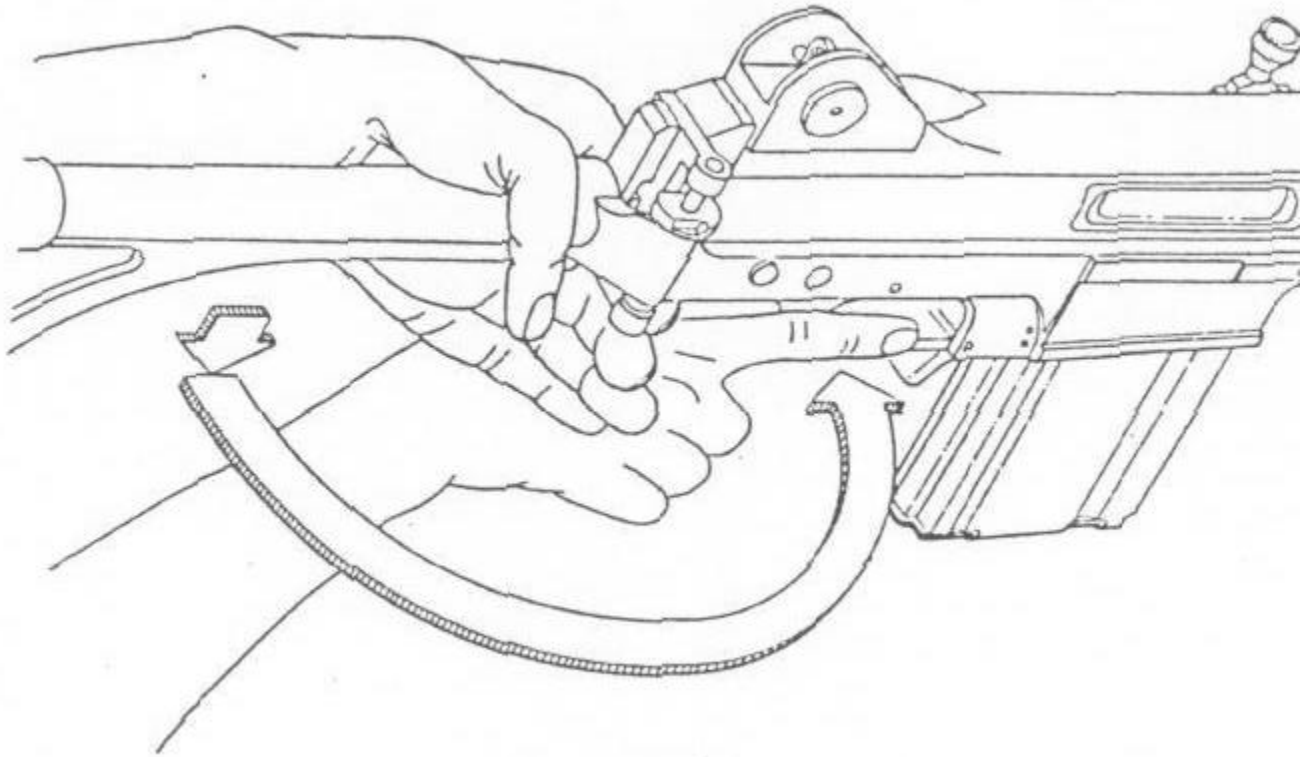


FIGURE 12

3. To extend the stock, simply pull the stock away from the side of the receiver and back into the locked position.

CAUTION: Do not exert excessive pressure on the stock assembly during any of these procedures. Do not allow the stock to either slam against the receiver or back into the fully extended configuration. The HAC-7 rifle is constructed to withstand rough usage, but needless abuse will cause any tool to malfunction and eventually fail.

Adjustment of 7M/7ML/7S/7SL Triggers :

----- SEE ENCLOSURE WITH FIREARM -----

SECTION 3: MAINTENANCE

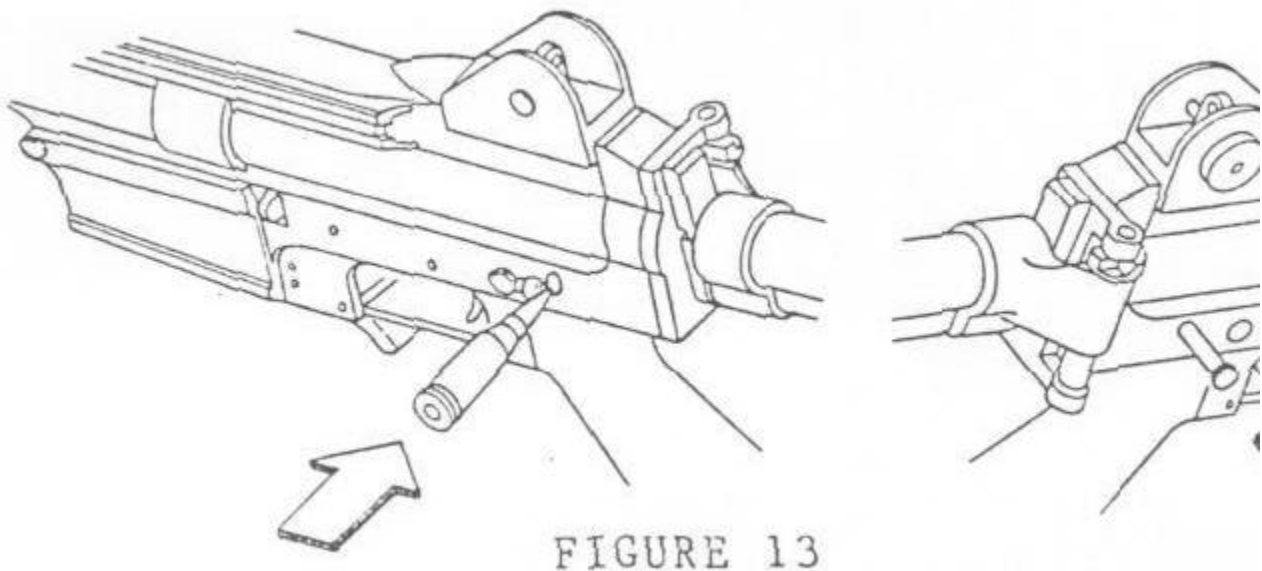
The Holloway Arms Company rifles are designed to withstand rough usage in field conditions, but they will last longer, perform better, and remain safer if given proper care and maintenance. Keep your rifle clean and properly lubricated to prolong its reliable life. It is essential for the reliable operation and performance that the weapon receive careful regular and periodic maintenance. It should be

cleaned at the end of each day's firing. The rifle need only be field stripped for this maintenance. The rifle is designed so that no special tools are required to either strip or reassemble the weapon. NOTE: Force is unnecessary and should never be used either to strip or reassemble your rifle. To do so may result in damage to the rifle.

Field Stripping:

CAUTION:

1. ENSURE THAT THE MAGAZINE IS REMOVED AND THE RIFLE IS NOT LOADED BEFORE STRIPPING AND CLEANING, SO THAT IT WILL NOT ACCIDENTALLY FIRE.
2. WEAR SAFETY GLASSES WHEN FIELD STRIPPING THE RIFLE IN CASE A SPRING-LOADED COMPONENT WORKS LOOSE, WITHOUT YOUR CONTROL, TO PREVENT EYE INJURY.
3. BE SURE THAT YOU ARE FAMILIAR WITH THE SAFETY INSTRUCTIONS AND PRECAUTIONS IN SECTION 1.
4. BE sure that the bolt carrier assembly is fully forward.
5. Push the small end of the rear receiver pin in until the head of the pin is clear of the side of the receiver, and can be pulled all of the way to the end of its travel. NOTE: Both this pin and the forward receiver hinge pin are secured to the receiver by detents, and cannot be lost under normal use. (See Figure 13).



6. At this time, the rear of the upper receiver is free to move up and

away from the lower receiver. As it does so, the captive recoil spring and guide will protrude under spring pressure from the back of the upper receiver. Grasp the protruding portion and pull to the rear to remove the gas piston assembly and bolt carrier group from the upper receiver. (See Figure 14).

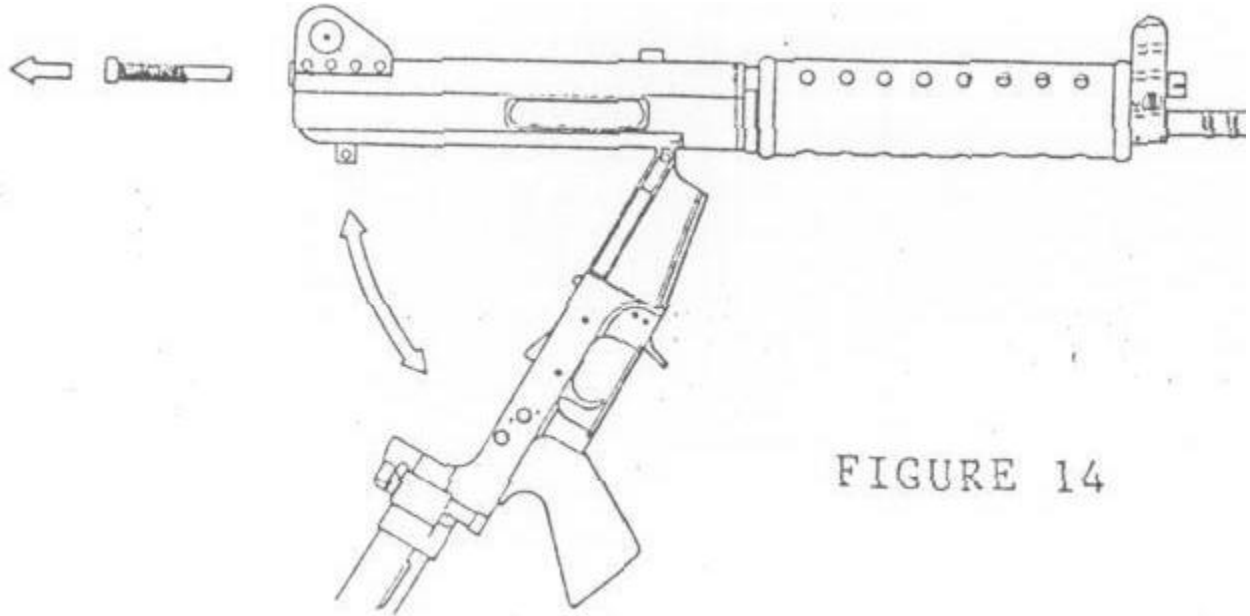


FIGURE 14

7. The upper receiver may now be removed completely from the lower receiver by pulling the forward receiver hinge pin all of the way to the end of its travel. The pin is held in place by a detent and cannot be lost under normal use.

8. Grasping the gas piston assembly in one hand, with the other hand pull the recoil spring guide and captive recoil spring out of the recoil spring channel in the gas piston assembly. (See Figure 15).



FIGURE 15

9. Lift the firing pin retaining pin away from the bolt carrier, and remove the firing pin from the rear of the bolt carrier group. The firing pin retaining pin is held to the bolt carrier by a detent, and cannot be lost

under normal maintenance procedures. NOTE: The firing pin retaining pin can be lifted either by the lifting groove, which will accommodate the rim of the proper cartridge of the rifle's caliber, or by inserting the tip of a bullet into the rear of the bolt carrier group and pressing the pin upwards. (See Figure 16).

10. Push the bolt all of the way to the rear. This will rotate the cam pin out from under the gas piston assembly. Remove the cam pin by lifting it out of the cam pin slot. (See Figure 17).

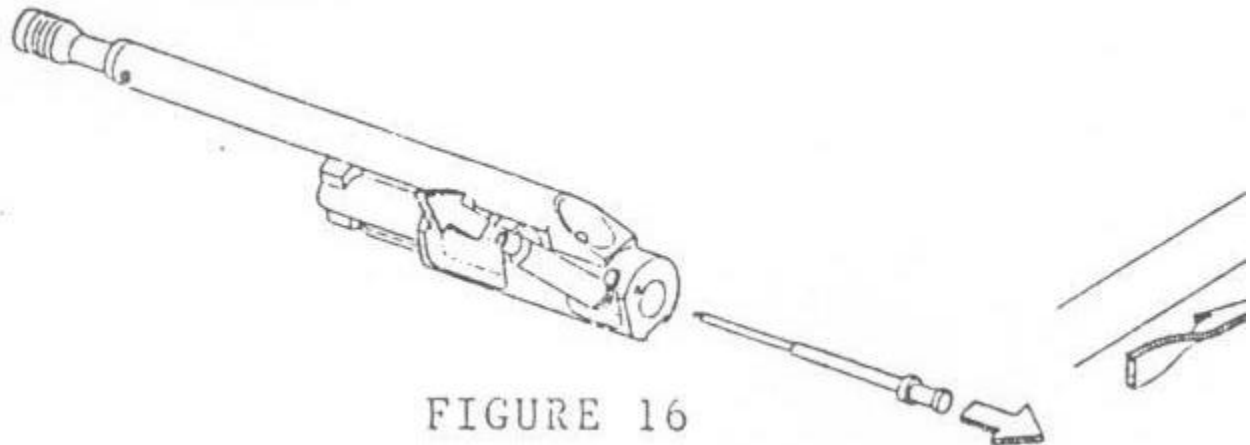


FIGURE 16

11. With the cam pin removed, the bolt may now be removed from the bolt carrier group by simply pulling the bolt forward. The bolt follower will move forward with the bolt and slip off of the bolt as it clears the leading edge of the bolt carrier. Place your hand under the bolt follower while removing the bolt to be sure that it does not fall. (See Figure 18) .

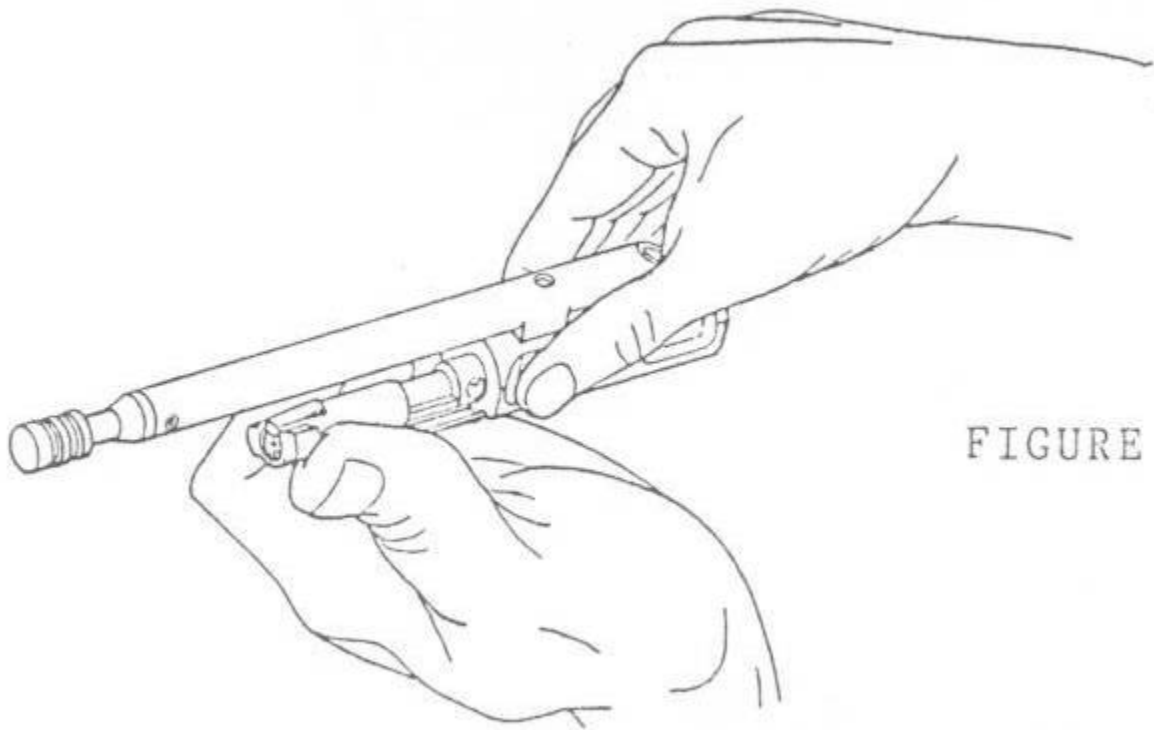
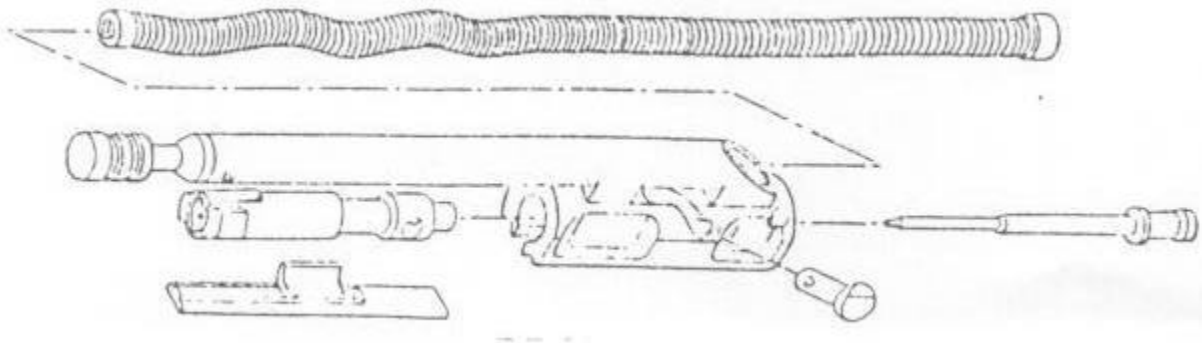


FIGURE 18

At this point, no further disassembly of the bolt, bolt carrier, or gas piston assembly is required or recommended .



12. To remove the handguards, place the rim, of a standard cartridge of the appropriate caliber for your rifle in the slot of the screw in the right forearm of the rifle. Unscrew the screw and remove it completely from the forearm assembly. At this time, the forearms will be able to be lifted away from the front sight assembly, and then forward and away from the rifle to remove. (See Figure 20).

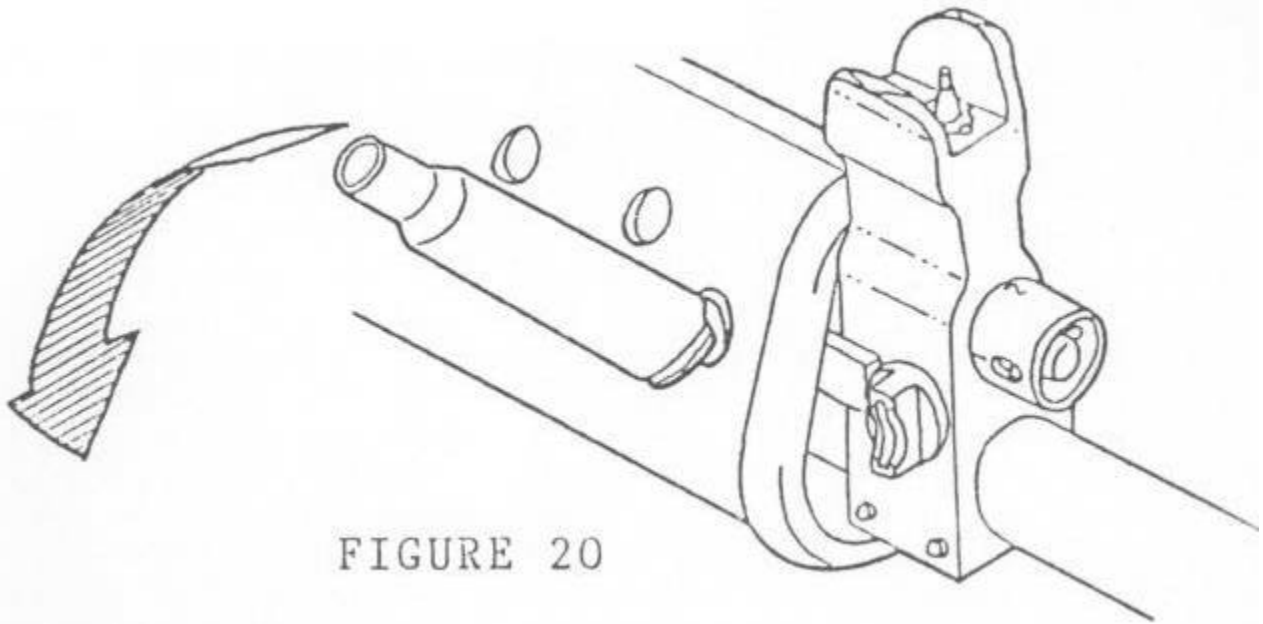


FIGURE 20

13. To remove the gas tube assembly, insert the base of a standard cartridge for the appropriate caliber for your rifle in the slot at either side of the gas tube nut. Using the cartridge as a lever, unscrew the gas tube nut from the gas cylinder housing. **DO NOT FORCE** the gas tube nut, as this may bend the gas tube. If the gas tube nut will not turn, apply a penetrating lubricant to free the threads. (See Figure 21).

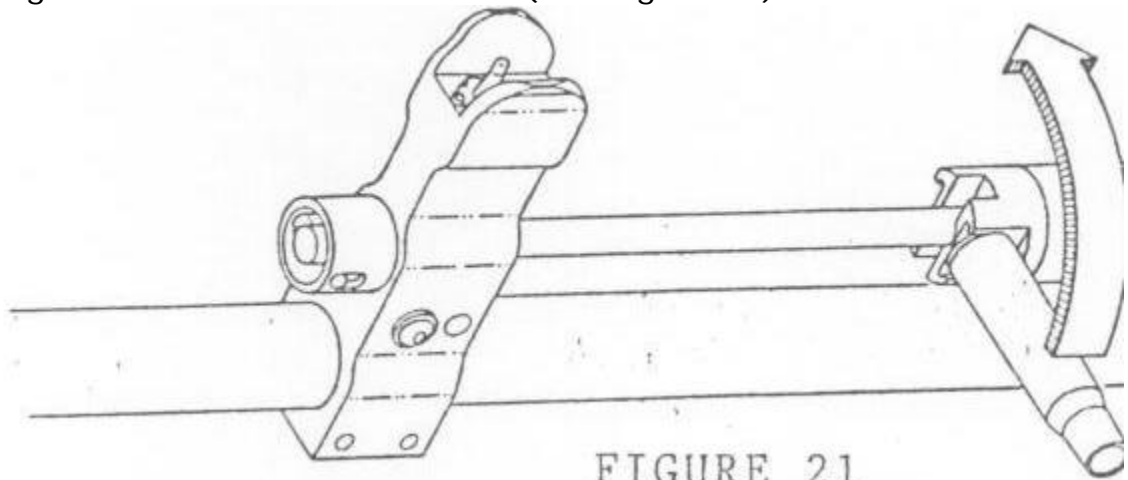
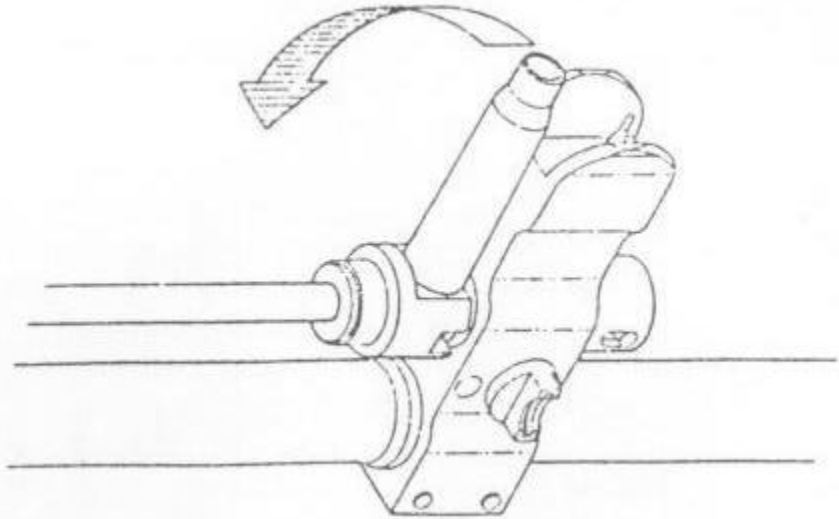


FIGURE 21

14. Once the gas tube nut threads are free of the gas cylinder housing, slide the gas tube nut and cartridge up the gas tube until the square cuts on the gas tube nut engage the square lugs on the upper end of the gas tube. With the lugs firmly engaged and completely seated in the cuts, again use the cartridge as a lever to unscrew the gas tube from the front sight assembly. (See Figure 22).

FIGURE 22



IMPORTANT: This will conclude the field stripping of the rifle, allowing access to all internal components. Do not strip the rifle any further than previously described. If additional maintenance is required, see "Service and Repair" following in this section.

15. Reassemble in reverse order.

16. When reassembling the gas tube assembly, DO NOT OVERTIGHTEN, as this could damage the rifle.

17. DO NOT FORCE ANY PART. IF ANY PART, COMPONENT, OR ASSEMBLY DOES NOT FIT EASILY, DISASSEMBLE THE PART, COMPONENT, OR ASSEMBLY AND REASSEMBLE PROPERLY.

18. When reinstalling the bolt into the bolt carrier, be sure that the bolt follower is correctly installed in the groove in the bolt and in the slot in the bolt carrier. (See Figure 23).

19. When reinstalling the bolt into the bolt carrier, be sure that the extractor is on the same side of the bolt carrier as the ejection port of the rifle. (See Figure 23).

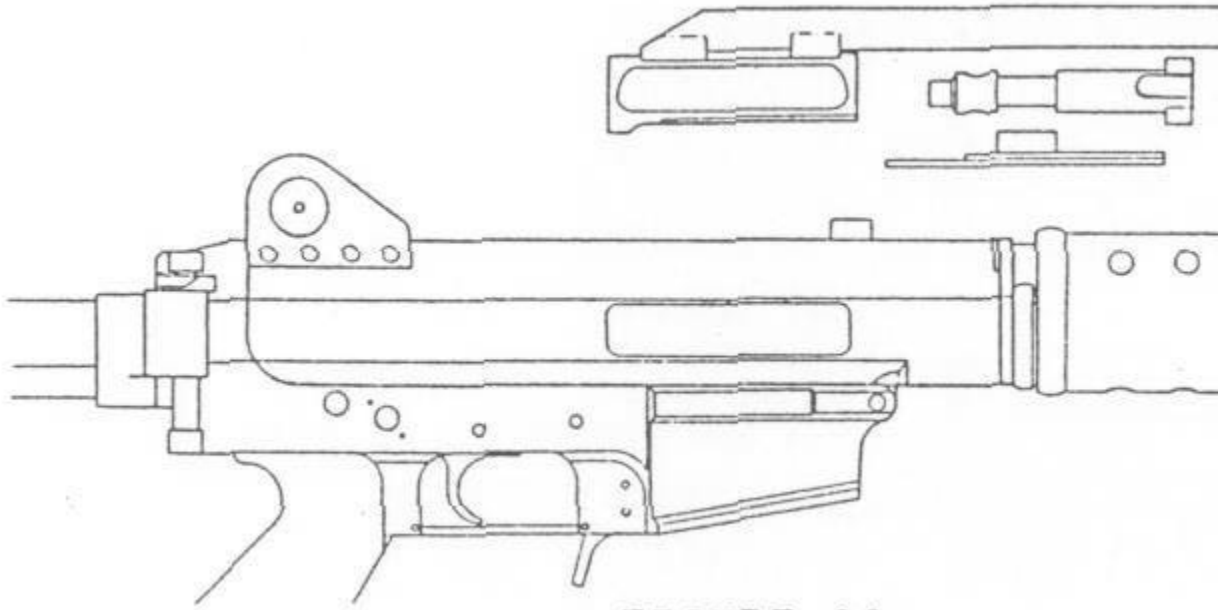


FIGURE 23

20. When reinstalling the cam pin, be sure that the beveled side of the cam pin top is towards the top of the bolt carrier. (See Figure 24).

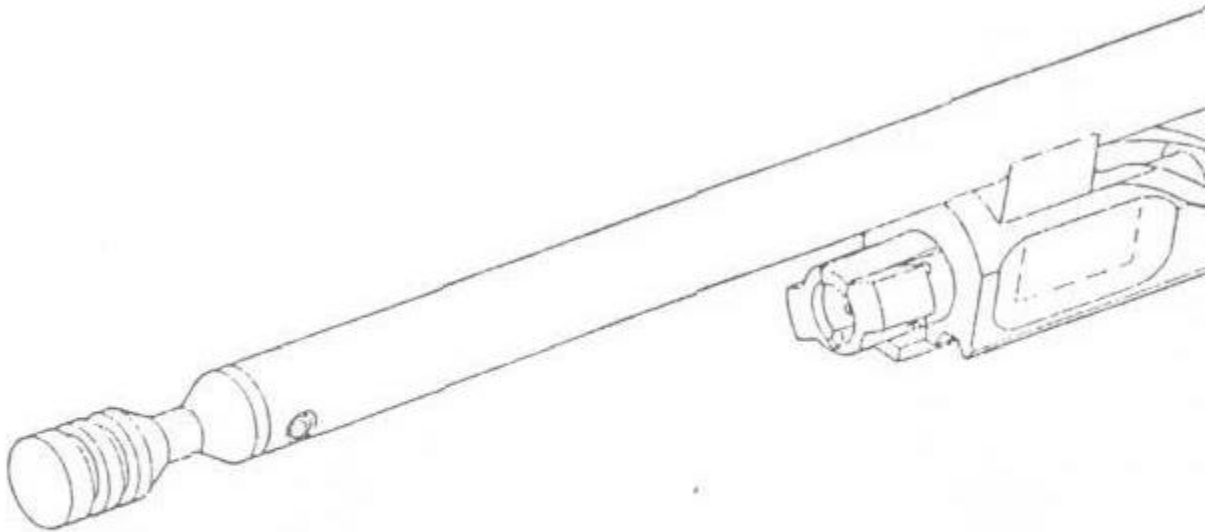


FIGURE 24

21. Before installing the firing pin, fully extend the bolt. Be sure that the firing pin retaining pin is behind the large shoulder of the firing pin. (See Figure 25).

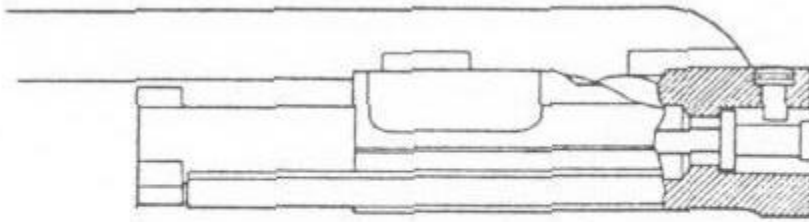


FIGURE 25

22. Keep the bolt fully extended while inserting the bolt carrier group/gas piston assembly back into the upper receiver. Insure that the hammer is cocked and that the selector switch is in the "SAFE" position during reassembly. (See Figure 26).

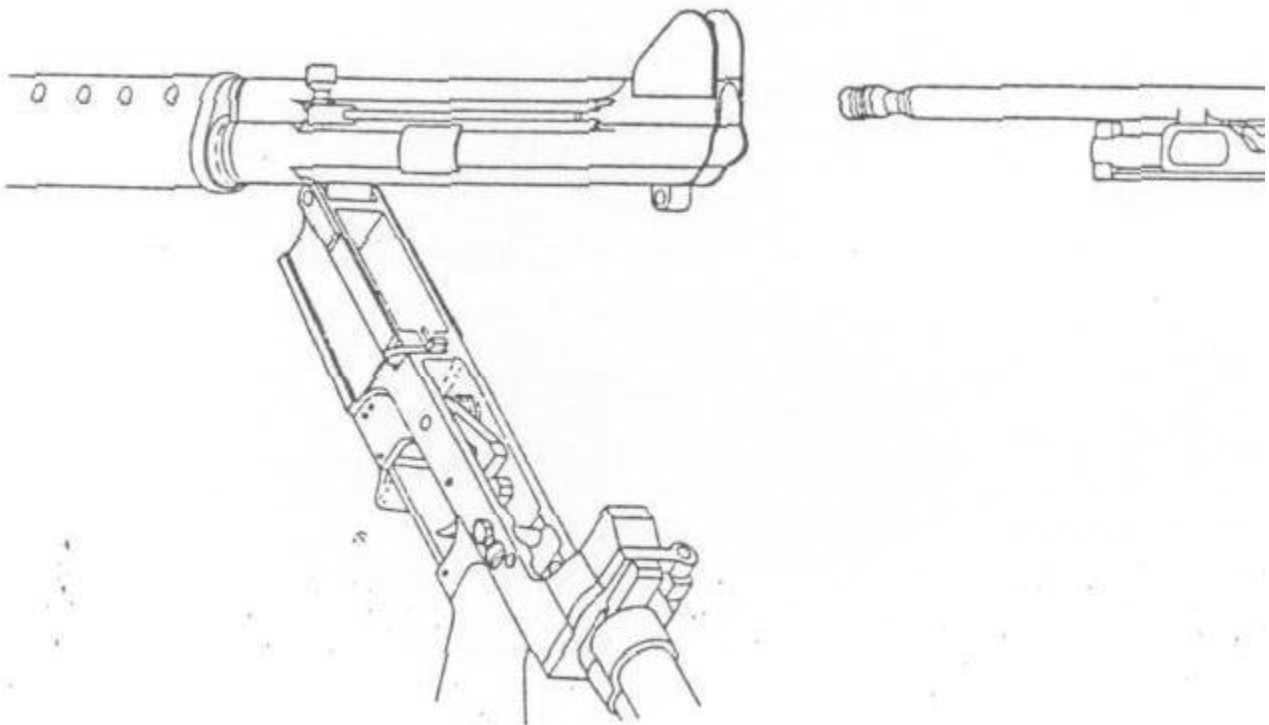


FIGURE 26

23. Push the end of the recoil spring guide and captive recoil spring into the upper receiver to clear the lower receiver during the downward pivot to engage the rear receiver pin. (See Figure 27)

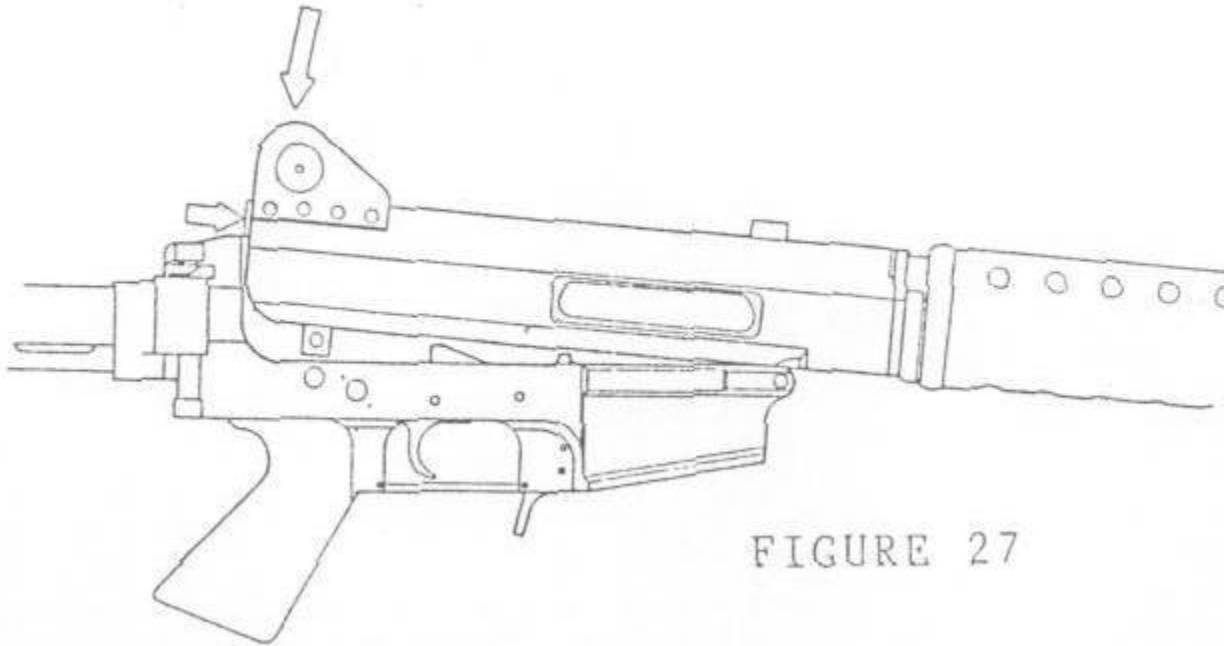


FIGURE 27

24. After reassembly perform a function check.

25. Disassembly and reassembly of the magazine:

- a. With a bullet tip, raise the rear of the magazine base plate so that the two detents will clear the back edge of the magazine body. (See Figure 28)

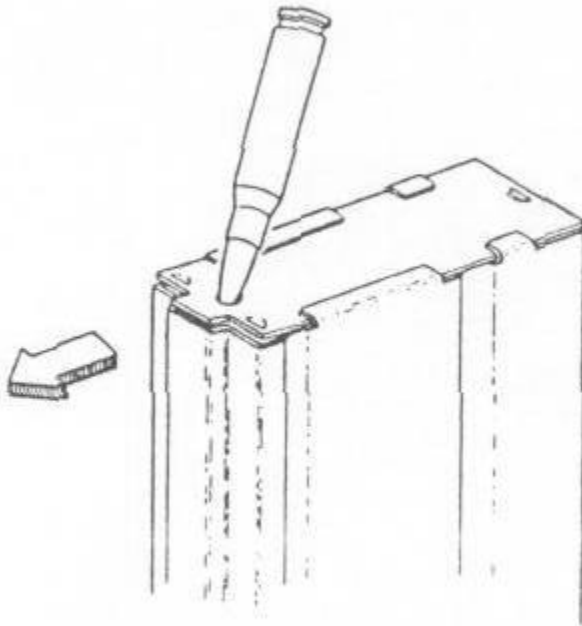


FIGURE 28

- b. Withdraw the magazine base plate to the rear of the magazine. Magazine spring, follower, and magazine plug (if any) will remove from the bottom of the magazine.
- c. At this time, magazine plugs may be added or removed for hunting, competition, etc.
- d. Reassemble in reverse order. Be sure to fully compress the spring before replacing the magazine base plate.

Cleaning:

1. CAUTION: BE SURE THAT YOU ARE FAMILIAR WITH THE SAFETY INSTRUCTIONS AND PRECAUTIONS IN SECTION 1.
2. The HAC-7 rifle can withstand rough usage in field conditions, but it will last longer, perform better, and remain safer in operation if it is given proper care and maintenance. Keep your rifle clean and properly lubricated to prolong its reliable life.

3. Whenever the rifle is disassembled, visually inspect:
 - a. Firing pin check for cracks, bent, blunted, or broken tip.
 - b. Extractor check for cracks, spring tension.
 - c. Bolt face check for pitting, make sure that the firing pin hole is round.
4. The rifle should be cleaned as soon as possible after firing so that the task will be easier and to reduce the opportunity for corrosion. When the rifle has not been fired, clean it periodically, once or twice a year in temperate environments, or as often as once a month in tropical or humid climates.
5. Cleaning equipment needed:
 - a. Cleaning rod of the proper caliber.
 - b. Cotton flannel cleaning patches of the proper caliber.
 - c. Brass bore brush of the proper caliber.
 - d. 7.62mm NATO / .308 Win. brass chamber brush.
 - e. Small toothbrush.
 - f. Bore solvent.
 - g. Good quality light gun oil. h. Pipe cleaners.
6. CAUTION: ENSURE THAT THE RIFLE IS NOT LOADED.
7. Field strip rifle for cleaning as previously described.
8. Wipe all disassembled parts to remove all traces of oil, lubricant, and dirt. Use a swab soaked with solvent.
9. Attach a solvent-soaked patch to the end of the cleaning rod and push through the barrel from the BREECH to the MUZZLE. NOTE: Avoid contact between the cleaning rod and the crowning of the muzzle of the rifle barrel as the resultant wear will reduce accuracy. Repeat procedures until clean patches emerge. NOTE: DO NOT ATTEMPT TO REVERSE THE DIRECTION OF THE PATCH WHILE IT IS INSIDE OF THE BORE. DO NOT FLEX OR BEND THE ROD.
10. Attach a brass wire brush of the proper caliber for your rifle to the end of the cleaning rod. Dip the brush into the bore solvent and brush the bore thoroughly. DO NOT submerge the barrel in the cleaning solution. Brush the bore from CHAMBER to HUZZLE, using straight

through strokes. NOTE: DO NOT ATTEMPT TO REVERSE THE DIRECTION OF THE BRUSH 14HILE IT IS INSIDE OF THE BORE. DO NOT FLEX OR BEND THE ROD.

Push the brush through until it extends clear of the muzzle. Continue until the bore is well coated with solvent.

11. Remove the brush from the cleaning rod and repeat Steps 9 and 10 until the bore is completely clean.

12. Dip the chamber brush into the solvent and insert it into the chamber. Thoroughly brush the chamber, wiping periodically with patches, until it is completely clean.

13. Dry the barrel and chamber by swabbing with a dry patch. Remove any residual solvent from the Oas passages in the front sight assembly with a pipe cleaner.

14. Inspect all gas system parts for carbon deposits. If any are present, use the wire brush dipped in solvent to remove them. Thoroughly clean the gas piston and gas cylinder. Run a solventsoaked pipe cleaner through the gas tube, and thoroughly dry the tube, inside and out, when clean. NOTE: Insure that no oil or solvent remains on any gas system part, as it only increase the buildup of carbon deposits and fouling.

15. Clean the firing pin, cam pin, bolt follower, bolt, and bolt carrier assembly with a small toothbrush dipped in solvent. Thoroughly dry all parts after they are clean.

16. Clean the recoil spring guide and captive recoil spring using a small toothbrush dipped in solvent. Thoroughly dry after all parts are clean.

17. Be sure to clean inside the bolt carrier also, the firing pin channel and firing pin hole in the bolt is best cleaned by a solvent-soaked pipe cleaner. Be sure to dry thoroughly after cleaning.

18. With the small toothbrush, patches, and pipe cleaners, thoroughly clean the lower receiver. Be sure to get into all of the holes and crevasses, and behind parts using the pipe cleaners. Remove the dirt, oil, and solvent, paying particular attention to the trigger, hammer, and selector assemblies.

CAUTION: DO NOT USE WIRE BRUSH OR ANY TYPE OF ABRASIVE MATERIAL TO CLEAN THE SURFACES OF EITHER THE UPPER RECEIVER OR THE LOWER RECEIVER.

19. Lubrication:

NOTE: The HAC-7 rifle is designed to function in all possible conditions, and to function with an acceptable amount of dirt and fouling. Excessive fouling, will cause any weapon to malfunction. Proper maintenance and lubrication by the shooter will prevent such an occurrence. The HAC-7 can function without lubrication, but this is undesirable due to the resultant excessive wear on the rifle. In the following lubrication instructions, please keep in mind the conditions in which you will be using the rifle. In conditions of extreme dust, the grit will adhere to the oil and become an abrasive. In these conditions, we recommend either the lightest possible application of lubricant or the use of one of the high quality dry lubricants available on the market. In conditions of sub-zero temperatures, we recommend the use of either one of the high quality dry lubricants available on the market or a lubricant specifically formulated to function in these adverse conditions.

- a. Lightly lubricate the bore by passing a patch dipped in lubricant through the bore.
- b. Lightly lubricate the front sight. Depress the front sight detent several times to work the lubricant into the spring.
- c. Lightly lubricate the external surfaces of the barrel covered by the forearm.
- d. Lightly lubricate the firing pin and the firing pin channel in the bolt.
- e. Generously lubricate the outside of the bolt, the bolt carrier, the cam pin, the front and rear receiver pins, and all of the internal parts of the lower receiver.
- f. Lightly lubricate all external metal surfaces to remove any fingerprints. NOTE: Fingerprint moisture could corrode the metal if left on the rifle.

20. After checking that no brush bristles or portions of patches are left lodged in the weapon, reassemble the rifle as previously described.

21. Perform a function check, as previously described.

22. Be sure that all plastic parts (pistol grip, forearm, etc.) are dry and free of oil and solvent.

CAUTION: ALWAYS UNLOAD YOUR RIFLE FOR STORAGE AND STORE AMMUNITION SEPARATELY.

Store your rifle and ammunition securely locked and in separate locations out of the reach and sight of children. (Children are naturally curious and do not always

believe in the real danger of mishandled firearms). Do not store your rifle in an air-tight container, and do not seal or attempt to seal the barrel to exclude dust. The internal steel surface is more likely to corrode in these conditions. Use the provided muzzle cap to keep dust out. Do not store your rifle in a gun case, as the lining is likely to contain sufficient moisture to damage your rifle after prolonged storage. The rifle should have a light coat of preservative oil on all metal parts, including the gas system parts. All of this oil must be removed prior to firing and the proper lubricant applied.

The best storage is in an upright position in a cabinet, behind closed doors, but with free air circulation to retard moisture accumulation. If your rifle has telescopic sights mounted, be sure that the lens caps are in place. For additional protection against moisture, packages of dessicant may be placed in the cabinet , **BUT DO NOT PLACE THEM IN CONTACT WITH YOUR FIREARMSS**. Follow manufacturer's directions for renewing the dessicant.

Service and Repair:

Should your rifle require adjustment or repair, i.iake sure that it is **NOT LOADED** and send it to:

HAC
3959 Vickery Blvd.
Ft. Worth, TX 76107
ATTN: Service Department

Do not indicate the contents, or include the full name of the company on the box or in the address on the package so that an inquisitive thief will not be attracted.

IMPORTANT: If you make unauthorized adjustments or use unauthorized parts, Holloway Arms Company will not assume responsibility for correct functioning of the rifle.

To return your rifle, write a letter to Holloway Arms Co. explaining the problem and your requirements in as much detail as possible. Include the full model number, serial number, and caliber of your rifle to-ether with your return address, and send it to H.A.C. for return authorization BEFORE you send the rifle . **HOLLOWAY ARMS COMPANY WILL NOT ACCEPT ANY UNAUTHORIZED RETURNS.**

Holloway Arms Co. will send a return authorization notice. This notice will be assigned a number which must appear prominently on the package. Send a copy of this notice and a copy of your letter with the rifle.

NOTE: HOLLOWAY ARMS COMPANY WILL NOT ACCEPT ANY FREIGHT COLLECT SHIPMENTS.

Various Federal and state laws and local ordinances govern the transfer and

transportation of firearms. Consult your local dealer as to the regulations affecting, you and your area. When in doubt, consult the shipper and the Bureau of Alcohol, Tobacco, and Firearms, Internal Revenue Service, U.S. Treasury Department for advice and rulings.

Before shipping your rifle, follow these directions:

1. CAUTION: MAKE SURE THAT THE RIFLE AND THE MAGAZINE ARE NOT LOADED.
2. Put the return authorization number prominently on the outside of the package.
3. Include your letter and return authorization with your rifle.
4. Do not send cases, accessories, or ammunition.
5. Insure the contents of the package against loss and theft.

To order parts, illustrations and lists of parts names and numbers are included in the next section of this instruction manual to help you identify the part(s) you may need. It is important to note that all parts are not available for sale, and that the sale of some parts are restricted by the National Firearms Act , and these parts are so marked. Those parts that are available should be installed by Holloway Arms Co. or by a competent, qualified professional gunsmith.

When ordering parts, please give the complete part number and name as shown on the parts list. Please give the caliber, full model designation, and serial number of your rifle. Holloway Arms Co. will reply with a statement of cost of those parts which are available for sale.

SECTION 4: PARTS LISTS AND ILLUSTRATIONS

This section is provided so that you may identify the names of parts for your own interest. However, for adjustment, repair, replacement, or spare parts, see Section 3, "Service and Repair".

Parts marked with an asterisk (*) are only available as part of an assembly, and are not available as a separate component.

Parts marked with a check mark (>) are only available as factory-fitted parts to the customer's weapon, and are not available as a separate component.

Parts marked with a null sign (0) are only available to special tax payers under the National Firearms Act. Proof of this status must be on file with Holloway Arms Co.

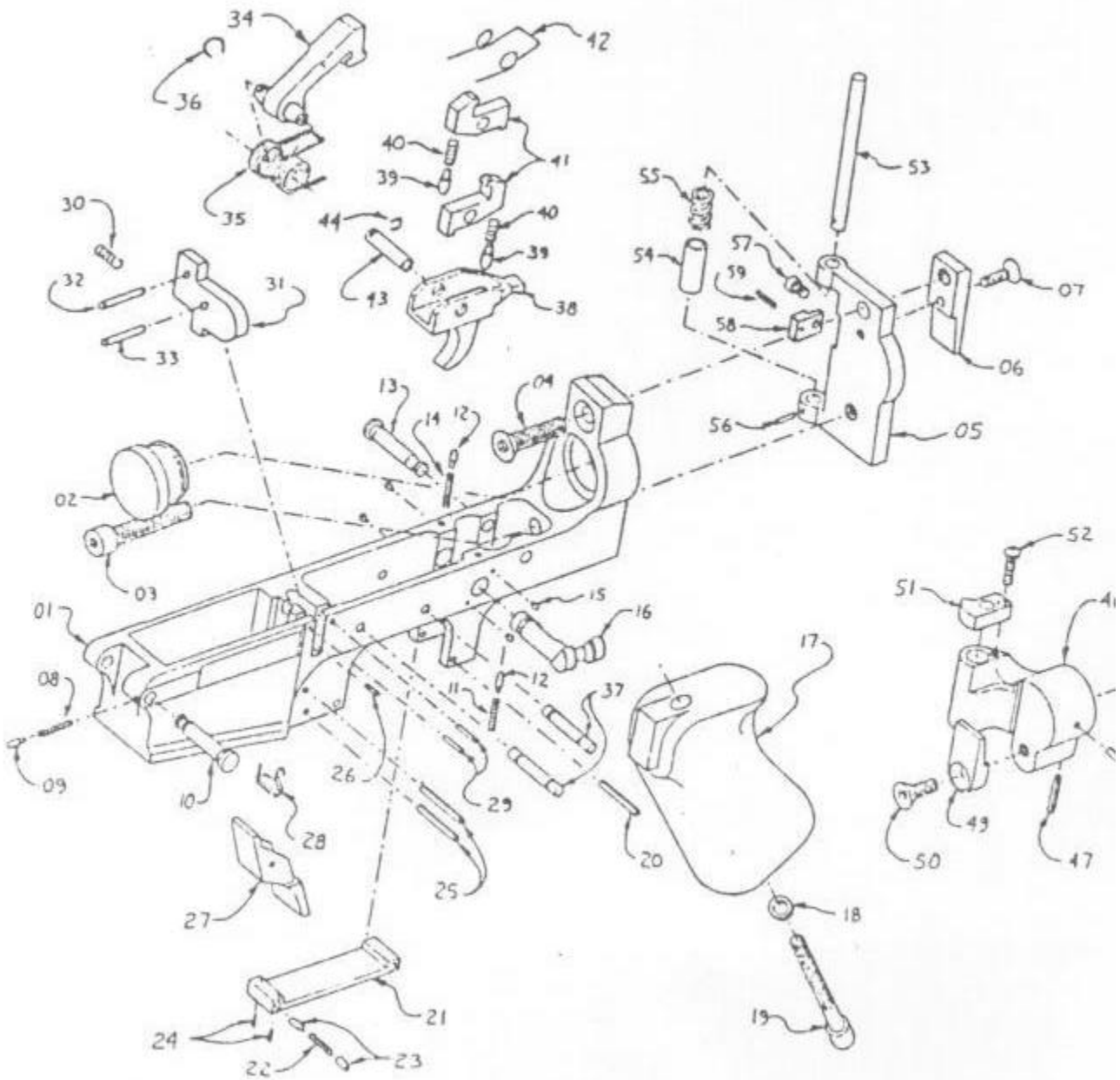
Lower Receiver Group and Stock Groups (Fixed and Folding) -

Models 7/7C/7L/7CL - All Calibers

Fig. Part Description/Part Name # in Rifle

01 >7101-00 Receiver, Lower (I'M) 1
 01 >7101-02 Receiver, Lower (LII)
 02 7102-00 Buffer
 03 7402-00 Bolt, Hinge Plate
 04 7410-00 Screw, Hinge Plate 1
 05 7401-00 Plate, Receiver Hinge 1
 06 7403-00 Plate, Receiver Catch 1
 07 7404-00 Screw, Latch Plate 1
 06 7103-00 Spring, Front Hinge Pin Detent 1
 09 7106-00 Detent, Front Hinge Pin 1
 10 7104-00 Pin, Front Hinge 1
 11 7107-00 Spring, Rear Hinge Pin Detent 1
 12 7119-00 Detent, Selector & Rear Hinge Pin 2
 13 7105-00 Pin, Rear Hinge 1
 14 7120-00 Spring, Selector Detent 1
 15 7136-00 Stop, Selector 4
 16 7113-00 Assembly, Selector 1
 17 7246-00 Grip, Pistol 1
 18 72406-00 Washer 1
 19 7247-00 Bolt, Pistol Grip 1
 20 7122-00 Pin, Trigger Guard Hinge 1
 21 7121-00 Guard, Trigger 1
 7124-00 Spring, Latch 1
 23 7123-00 Pin, Latch 2
 24 7125-00 Retainer, Latch 2
 25 7140-00 Pin, Magazine Lever
 26 7129-00 Pin, Bolt Hold-Open Spring Hout 1
 27 71302-00 Lever, Magazine Catch/Release 1
 28 7139-00 Spring, Magazine Lever 1
 29 7131-00 Pin, Bolt Hold-Open Retainer 2
 30 7122-00 Spring, Bolt Hold-Open 1
 31 7134-00 Lever, Bolt Hold-Open 1
 32 7197-00 Pin, Bolt Hold-Open 1
 33 7135-00 Pin, Bolt Hold-Open Lever 1
 34 710b-00 Hammer, 1
 35 7109-00 Spring, Hammer
 36 7111-00 Retainer, Hammer Cross Pin
 37 7110-00 Pin, Hammer and Trigger 2

38 7112-00 Block, Trig-er I
39 7116-00 Plunger, Sear
40 7117-00 Sprino, Sear Plun-er 2
41 7113-00 '7 n r 9
42 7137-00 Spring, Trigger
43 7115-00 Tube, Trigger Cross Block
44 7111-01 Retainer, Trigger Cross Pin
45 7400-00 Assembly, Stock
46 7411-00 Hin-e, Stock (RII)
46 7411-02 Hinge, Stock (LH)
47 7420-00 Pin, Stock Strut
48 7418-00 Pin, Stock Tube
49 7412-00 Plate, Stock Latch
50 7413-00 Screw, Stock Latch Plate
51 7414-00 Plate, Stock Detent (RII)
51 7414-02 Plate, Stock Detent (Lit)
52 7415-00 Screw, Detent Plate
53 7405-00 Pin, Stock Hinge
54 7407-00 Sleeve, Hinge Pin
55 7406-00 Spring, Hinge
56 7408-00 Retainer, Hinae Pin
-57 7409-00 Stud, Stock Detent
SL; 7422-00 Block, Stock Guide
59 7423-00 Pin, Stock Guide Pin

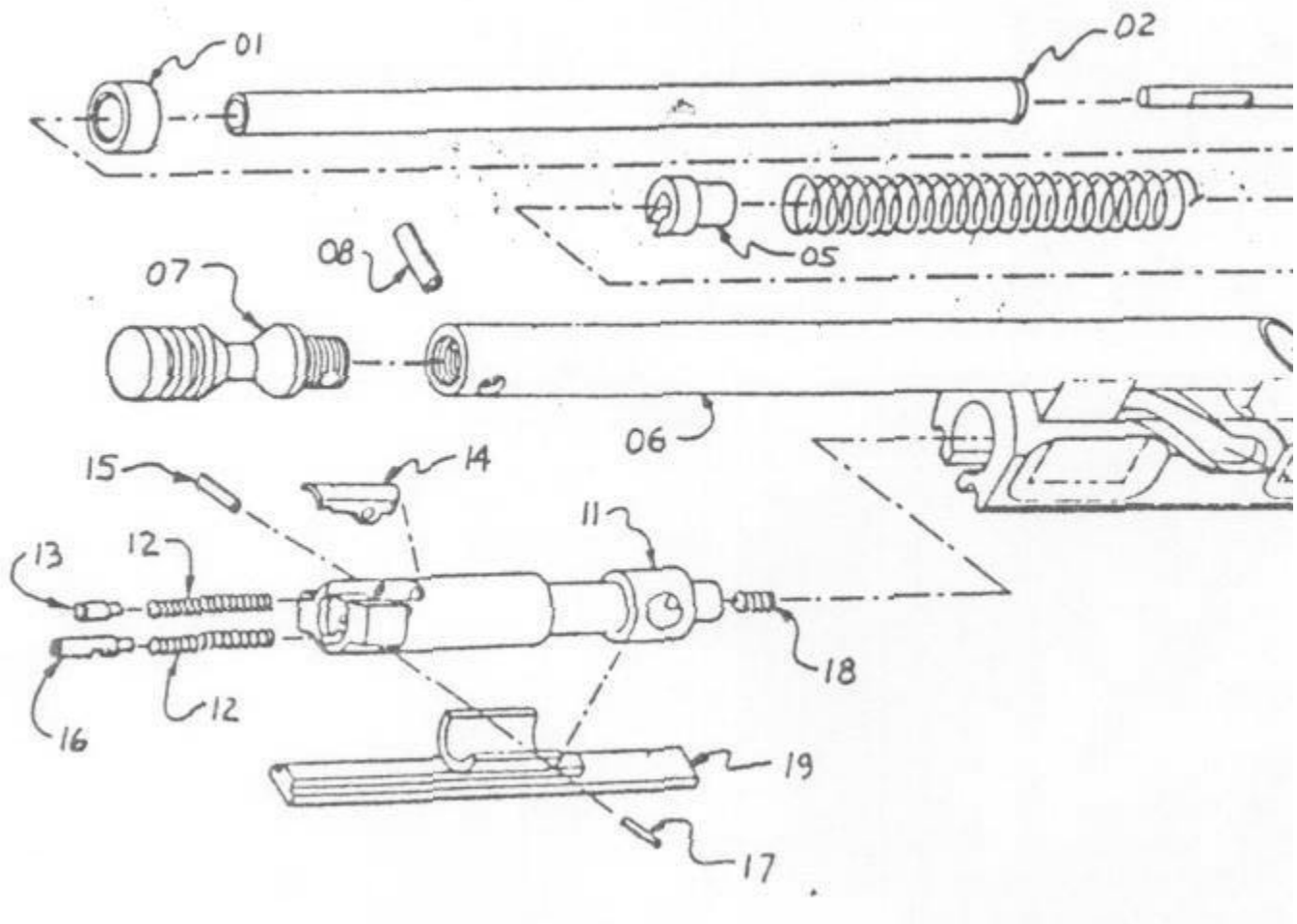


Bolt Carrier Group and Gas Piston Assembly - All Models, All Calibers, Right and Left Handed.

Part Description/Part Name in the rifle

- 01 7290-00 Collar, Spring Guide
- 02 7288-00 Tube, Outer Spring Guide

on 7269-00 Guide, Inner Spring
04 7294-00 Spring, Operating
03 7291-00 Retainer, Spring Guide
06 7280-00 Assembly, Bolt Carrier (RH) 1
06 72180-02 Assembly, Bolt Carrier (L11) 1
07 7286-00 Piston, Gas
06 72L-37-00 Pin, Gas Piston
09 7282-00 Retainer, Firing Pin
10 7283-00 Screw, Firing Pin Retainer I
11 >7235-00 Bolt (R11) I
11 >7235-02 Bolt (L11:1) 1
12 7275-00 Spring, Extractor US Ejector 2
13 7274-C)U Plun g er, Extractor 1
14 7272-00 Extractor 1
15 7273-00 Pin, Extractor 1
16 7276-00 Ejector 1
17 7277-00 Pin, Ejector 1
18 7236-00 Spring, Firing Pin 1
19 7279-00 Assembly, Cartrid-e Bearin- Plate I
20 7293-00 Pin, Cam 1
21 7292-00 Pin, Firing 1
0



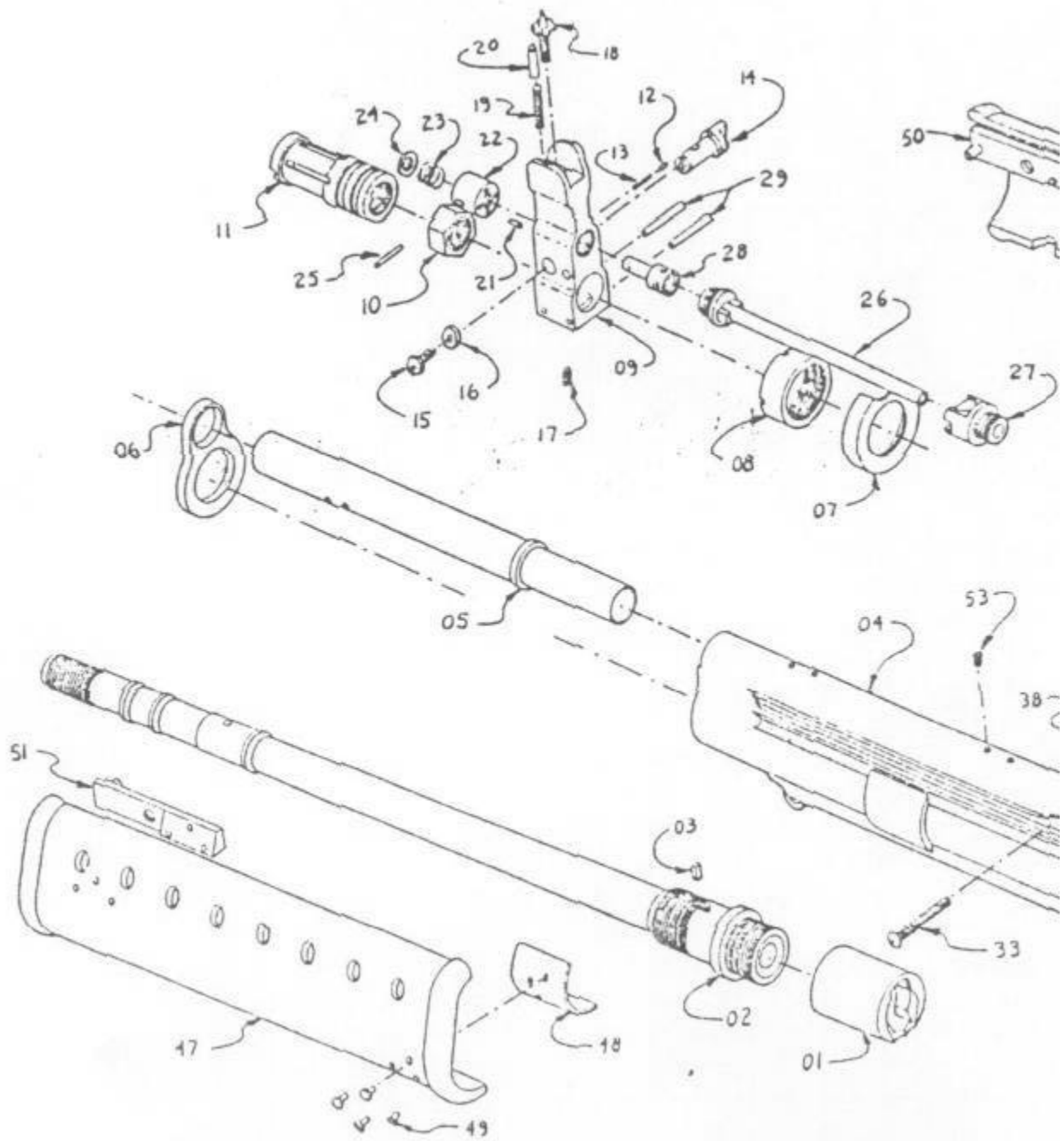
Upper Receiver Assembly - 7/7C/7L/7CL/7A/7AC/7AL/7ACL/7AK/ 7AKL - All Calibers.

Fig. Part Description/Part Name Rifle

- 01 >7229-00 Extension, Barrel (RH) 1
- 01 >7229-02 Extension, Barrel (LH) 1
- 02 >7228-00 Barrel, 20", .308 Win. (RH) 1
- 02 >7228-10 Barrel, 20", .243 Win. (RH) 1
- 02 >7228-20 Barrel, 20", 7mm-08 Rem. (RH) 1
- 02 >7228-30 Barrel, 20", .358 Win. (RH) 1
- 02 >7228-02 Barrel, 20", .308 Win. QH) 1
- 02 >7228-12 Barrel, 20", .243 Win. QH) 1
- 02 >7228-22 Barrel, 20", 7mm-08 Rem. (LH) 1
- 02 >7228-32 Barrel, 20", .358 Win. (LH) 1
- 02 >7228-40 Barrel, 16", .308 Win. (RH) 1
- 02 >7228-50 Barrel, 16", .243 Win. (RH) 1

02 >7228-60 Barrel, 16", 7mm-08 Rem. (RH)
02 >7228-70 Barrel, 16", .358 Win. (RH)
02 >7228-42 Barrel, 16", .308 Win. (LH) 1
02 >7228-52 Barrel, 16", .243 Win. QH) 1
02 >7228-62 Barrel, 16", 7mm-08 Rem. QH) 1
02 >7228-72 Barrel, 16", .358 Win. (LH) 1
03 7232-00 Key, Barrel Alignment 1
04 >7200-00 Receiver, Upper (RH)
04 >7200-02 Receiver, Upper (LH)
05 7219-00 Housing, Gas Cylinder
06 7221-00 Retainer, Gas Cylinder 1
07 7241-00 Retainer, Rear Forearm 1
08 7230-00 Nut, Barrel 1
09 7252-00 Housing, Front Sight 1
10 7227-00 Nut, Muzzle Brake 1
11 7226-00 Brake, Muzzle 1
12 7119-00 Detent, Gas Cut-Off 1
13 7263-00 Spring, Detent 1
14 7262-00 Cut-Off, Gas 1
is 7265-00 Screw, Gas Cut-Off Retainer 1
16 7267-00 Washer 1
17 7250-00 Screw, Front Sight Set 1
18 7254-00 Sight, Front 1
19 7256-00 Spring, Detent 1
20 7255-00 Detent, Front Sighc 1
21 7261-00 Detent, Gas Regulator Knob 1
22 7258-00 Knob, Gas Regulator 1
23 7266-00 Spring, Gas Regulator Knob 1
24 7260-00 Washer, Gas Regulator Knob i
25 7259-00 Pin, Gas Regulator Head 1
26 7224-00 Assembly, Gas Tube 1
27 7220-00 Plug, Gas Cylinder 1
28 7257-UG Head, Gas Regulator 1
29 7253-00 Pin, Sight Hounting 2
30 7309-Go Spring, Plunger 1
31 7308-00 Plunger, Rear Sight 1
32 7302-00 Sight, Rear i
33 7304-00 Screw, Rear Sight Adjusting 1
34 7306-00 Spring, Detent 1
35 7307-00 Detent, Rear Sight 1
36 7301-00 Knob, Rear Siphht Adjusting I
37 7305-00 Screw, Set 1
38 7300-00 Housing, Rear Sight (RH) 1
38 7220-02 Housing, Rear Sight (LH) 1
39 7303-00 Screw, Rear Sight Mounting 8
40 7207-00 Spring, Plunger Retainer 1

- 41 7208-00 Pin, Plunger Retainer 1
- 42 7205-00 Spur, Charging (RH) 1
- 42 7205-02 Spur, Charging (LII) 1
- 43 7209-00 Pin, Cocking Spur Retainer 1
- 44 7206-00 Plunger, Retainer 1
- 45 7203-00 Slide, Charging 1
- 46 7290-00 Forearm, Right 1
- 47 7290-02 Forearm, Left 1
- 48 7242-00 Extension, Forearm Rear 2
- 49 7243-00 Rivet, Forearm 14
- 50 7244-00 Extension, Right Forearm Front 1
- 51 7244-02 Extension, Left Forearm Front 1
- 52 7295-00 Screw, Forearm Retainer 1
- 53 7210-00 Screw, Scope Mount Plug 4



SECTION 5: TECHNICAL DATA AND DESCRIPTIONS

The Holloway Arms Co. Model 7 family of rifles are gas operated, air-cooled, magazine-fed shoulder weapons, designed primarily for semi-automatic fire. Certain models, in conformity with the National Firearms Act, are capable of

selective fire, which is to say, semi-automatic or fully automatic, at the shooter's discretion.

ALL TRANSFERS OF NATIONAL FIREARMS ACT WEAPONS ARE SUBJECT TO THE APPROVAL OF THE BUREAU OF ALCOHOL, TOBACCO, AND FIREARMS, INTERNAL REVENUE SERVICE, U.S. TREASURY DEPARTMENT, AND THE PAYMENT OF THE REQUIRED TRANSFER TAXES.

All models have the upper receiver drilled and tapped for scope use, and come with bases.

HAC MODEL 7 STANDARD RIFLE/HAC MODEL 7L STANDARD RIFLE

Magazine Capacity: 20 Rounds (2,5,8, and 10 also available)

Calibers: 7.62mmx51mm NATO/.308 Win.; .243 Win.; 7mm-08; .358 Win.

Barrel: 20", 1-in-10" twist, right hand, 6 groove (.308)

Overall Length, Stock Folded: 33

Overall Length, Stock Extended: 43

Overall Length, Fixed Stock: 43

Weight, w/o Magazine: 8 lb. 12 oz.

Weight, with loaded 20 round magazine:

Front Sight: Post, adjustable for elevation

Rear Sight: Aperture, adjustable for windage

HAC MODEL 7A SELECTIVE FIRE RIFLE/HAC MODEL 7AL SELECTIVE A FIRE RIFLE

Same as above, except:

Cyclic rate: 650-700 rounds per minute

HAC KODEL 7C CARBINE/HAC MODEL 7CL CARBINE

Magazine Capacity: 20 rounds (2,5,8, and 10 also available)

Caliber: 7.62mmx51mm NATOA 308 Win.; .243 Win.; 7mm-08; .358 Win.

Barrel: 16", 1-in-10" twist, right hand, 6 groove (.308)

Overall Length, Stock Folded: 29

Overall Length, Stock Extended: 39

Overall Length, Fixed Stock: 39

Weight, w/o magazine: 6 lb. 6 oz.

Weight with loaded 20 round magazine:

Front Sight: Post, adjustable for elevation

Rear Sight: Aperture, adjustable for windage

HAC MODEL 7AC SELECTIVE FIRE CARBINE/HAC MODEL 7ACL SELECTIVE FIRE CARBINE

Same as above, except:

Cyclic rate: 650-700 rounds per minute

HAC MODEL 7S SNIPER RIFLE/HAC MODEL 7SL SNIPER RIFLE

Magazine Capacity: 10 Rounds (2,5,8, and 20 also available)

Caliber: 7.62mmx51mm NATO/.308 Win.; .243 Win.; 7mm-08; .358 Win.

Barrel: 24", 1-in-10" twist, right hand, 6 groove, fluted (.308)

Custom barrels per shipping specifications.

Overall Length, Stock Folded: 36"

Overall Length, Stock Extended: 46"

Overall Length, Fixed Stock: 46"

Weight, w/o magazine:

Weight, with loaded 10 round magazine:

Front Sight: None.

Rear Sight: None.

Telescopic Sights: As per shipping specifications.

Rings and Bases: As per shipping specifications

HAC MODEL 7M MATCH RIFLE/HAC MODEL 7ML MATCH RIFLE

Magazine Capacity: One each 2 rounds and 8 rounds (5,10,and 20 also available)

Caliber: 7.62mmx51mm NATO/.308 Win.; .243 Win.; 7mm-08; .358 Win.

Barrel: 24", 1-in-10" twist, right hand, 6 groove,(.308) Custom barrels per shipping specifications

Overall Length, Stock Folded: 36"

Overall Length, Stock Extended: 46"

Overall Length, Fixed Stock: 46"

Weight, w/o magazine:

Weight, with loaded 8 round magazine:

Front Sight: Base for competition sights.

Rear Sight: Base for competition sights.

Competition Sights: As per shipping specifications.

FIREARM RECORD

HAC MODEL:

SERIAL NUMBER:

CALIBER:

PURCHASED FROM:

PURCHASE DATE:

PURCHASE PRICE:

SPECIAL/CUSTOM FEATURES:

Based on the Magnuson-Moss Warranty Act, Holloway Arms Co. offers no express warranty on its product line. However, Holloway Arms Co. recognizes its obligations concerning implied warranty. Holloway Arms Co. also stands behind its product as a service to the customer, and shall continue to provide service to the product line as a commitment to quality. Holloway Arms Co. products will be serviced for a period of one (1) year from the date of retail purchase, for defects in materials or workmanship, at no charge to the original purchaser. Be sure to retain your sales slip as proof of purchase date when making a claim.

IMPORTANT

Before it left the factory, this firearm was tested, test fired, carefully inspected, and carefully packaged. Holloway Arms Co. cannot control product handling after it leaves the factory; therefore, please examine this firearm carefully at the time of purchase to insure that it is unloaded and undamaged. The dealer will be pleased to assist you in making this examination and will endeavor to answer your further questions.

If you require a replacement instruction manual, please write to:

Holloway Arms Co.
3959 W Vickery Blvd.
Ft. Worth, TX 76107
ATTN: Customer Service

BASIC SAFETY RULES:

1. Always point a weapon in a safe direction.
2. Do not change the selector switch from the "SAFE" position until ready to fire.
3. Always keep the magazine and chamber empty and unloaded when not firing.
4. Always ensure that the weapon is unloaded and on "SAFE" before cleaning and/or disassembling.
5. Before attempting to fire a weapon, practice handling and operating it while it is empty, before loading it.
6. Before attempting to use the rifle, read the entire instruction manual.